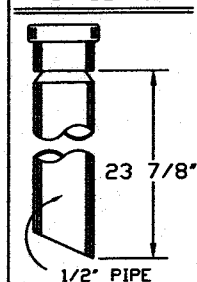
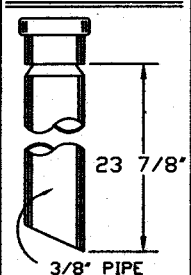


RETURN & P/UP DETAIL-A



RETURN & P/UP DETAIL-B



RETURN 1/2" NPT
(SEE DETAIL-A).

P/UP 1/2" NPT
(SEE DETAIL-A).

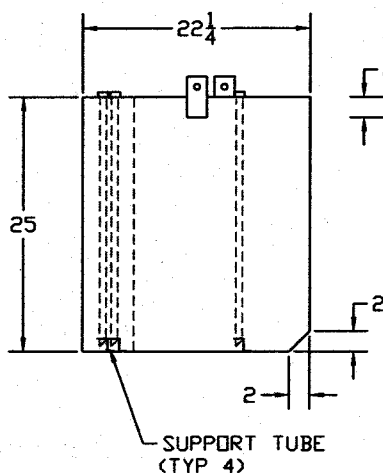
RETURN 3/8" NPT
(SEE DETAIL-B).

P/UP 3/8" NPT
(SEE DETAIL-B).

SENDER WEMA 24"

FILL 1 1/2" O.D. X 90°

VENT 5/8" O.D. X 90°



FILL HEIGHT
3 1/2

ON OTHER SIDE

CE

FMT-143S-SR

P/N: 1123082

Wt: 135.43 Lbs

FINISH: GRAY PAINT

CUTTING SPECIFICATIONS:

BDY: 45 5/8 X 86 7/16

TOP: 22 X 86 7/16

SIDE: 95 15/16 X 24 3/4

END: 22 X 24 3/4

END: 12 3/16 X 24 3/4

BAFFLES:

1 23 1/2 X 26 1/4

2 13 11/16 X 26 1/4

REVISION

01-21-98

CHNG NET GAL. FR/ 143.87, WT.
FR/ 131.35 lbs, LGTH FR/ 72 5/8
HT FR/ 27, WIDTH FR/ 21 7/16,
FITTING DISTR. & CUTTING
SPEC'S ACC.

04-06-98

CHNG VENT FR/ FACING UP, & FILL
FR/ 4", FILL HT FR/ 2 1/2, &
FILL FR/ FACING FWD

04-30-98

MOVE SENDER FR/ 8-1/2", AND
RETURNS FR/ 4-3/4" AND 2" - 2"
FR/ NEXT TO OTHER RETURN

08-08-02

CHNG P/UP & RET 1/2"

03-24-03

CHNG SENDER FR/ ROCH ADJ
AND ADDED MODEL 390 DA

03-26-03

MOVED SENDER FR/ 11"

06-05-03

ELIMINATED PLUGS

FLORIDA MARINE TANKS, INC.
16480 N.W. 48 AVE. HIALEAH, FL. 33014

SEA RAY BOAT 143 GALLON (STBD)
FUEL TANK FOR THE 380 DA & 390 DA

DRAWN BY: J. BLANCO SCALE: 1" = 1' MATERIAL: .125 ALUM

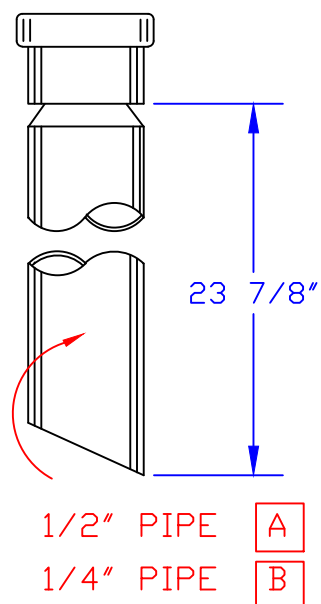
NET GAL: 143.49 DATE: 12-11-97 DRAWING NO: SR143.8S1297

CERT. DATE: APP'D:

PRODUCTION

DATE 6/05/03 Alicia

RETURN & P/UP DETAIL



CE

FILL 1 1/2" O.D. X 90°.

GEN P/UP 3/8" NPT
(SEE DETAIL-B).

GEN RETURN 3/8" NPT
(SEE DETAIL-B).

KINK (TYP-2)

(TYP-2)

GROUND

VENT 5/8" O.D. x 90°.

SENDER ISSPRO 24"

ENG RETURN 1/2" NPT
(SEE DETAIL-A).

ENG P/UP 1/2" NPT
(SEE DETAIL-A).

FMT-143AP-SR

P/N: 1123074

Wt: 106.9 Lbs

FINISH: GRAY PAINT

CUTTING SPECIFICATIONS:

BDY: 79 7/8 X 42 3/4

TOP: 31 1/2 X 42 3/4

END: 31 1/2 X 24 3/4

BAF: 33 X 26 1/4

REVISION

- | DATE | DESCRIPTION | REVISION |
|----------|--|----------|
| 01-21-98 | CHNG. NET GAL. FR/ 144.8, GROSS WT. FR/ 106.9 lbs, LENGTH FR/ 46, HT FR/ 27, WIDTH FR/ 27 7/8, AND CUTTING SPECS. ACC. | [A] |
| 04-06-98 | CHNG VENT FR/ FACING UP | [B] |
| 03-24-03 | CHNG SENDER FR/ ROCH ADJ & ADD-ED MODEL 390DA & GEN P/UP-RET | [C] |
| 05-21-03 | MOVED SENDER FR/ INBD | [D] |
| 06-05-03 | ELIMINATED PLUGS | [E] |
| 06-30-03 | CHNG GEN PUP FR 3/8" PIPE | [F] |
| 10-26-06 | CHNG SENDER FR/ WEMA | |

FLORIDA MARINE TANKS, INC.
120 PETER GILL RD. HENDERSON, N.C. 27537

SEA RAY BOAT 143 GALLON (PORT)
FUEL TANK FOR THE 380 DA & 390 DA

DRAWN BY: J. BLANCO	SCALE: 1" = 1'	MATERIAL: .125 ALUM
NET GAL: 143.31	DATE: 12-11-97	DRAWING NO: SR144.8AP1297
CERT. DATE:	APP'D:	