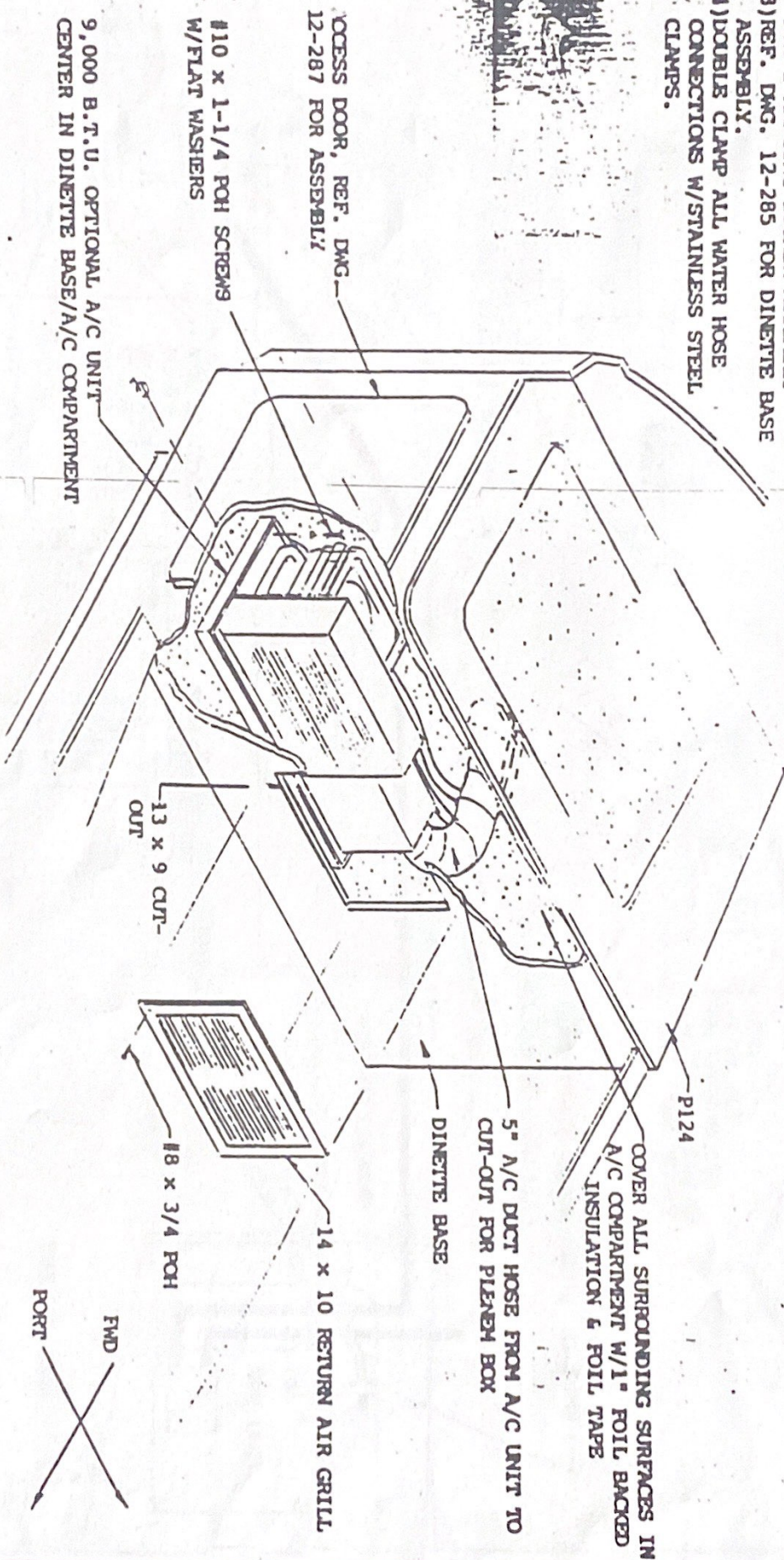


NOTE:

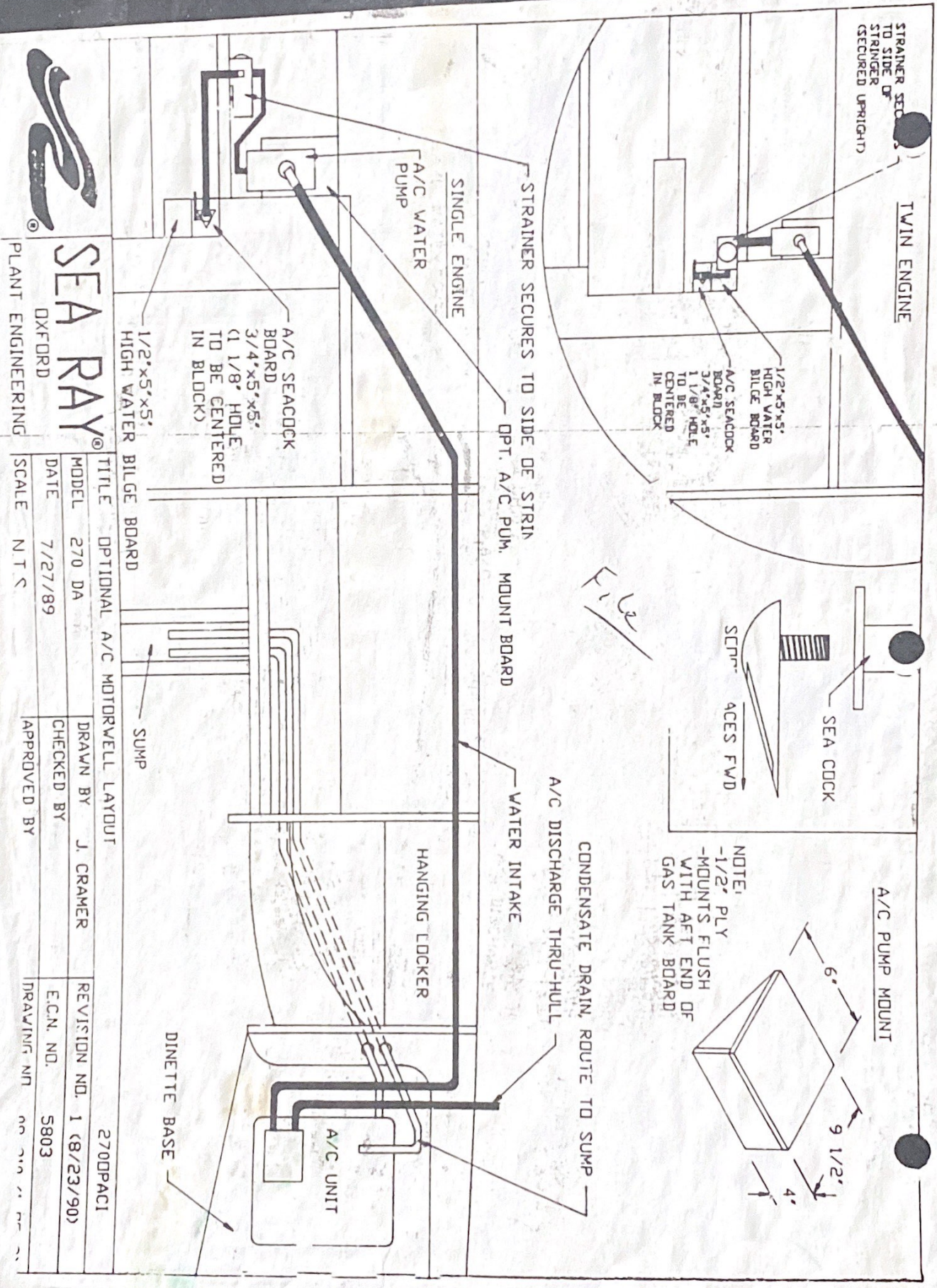
- 1) REF. DWG. 08-210 FOR A/C HOSE & DUCT ROUTES.
- 2) REF. DWG. 12-425 FOR A/C PLENUM BOX & HANGING LOCKER ASSEMBLY
- 3) REF. DWG. 12-285 FOR DINETTE BASE ASSEMBLY.
- 4) DOUBLE CLAMP ALL WATER HOSE CONNECTIONS W/STAINLESS STEEL CLAMPS.



**SEA RAY**  
PRODUCT DEVELOPMENT  
AND ENGINEERING

TITLE: OPTIONAL A/C UNIT INSTALLATION			
MODEL	270 DA	DRAWN BY	R. IIRICZO (HL)
DATE	5-11-89	CHECKED BY	<i>K. Robin</i>
SCALE		APPROVED BY	<i>[Signature]</i>
		REVISION NO.	1
		ICN NO.	6033
		DRAWING NO.	08-205





STRAINER SEC TO SIDE OF STRINER (SECURED UPRIGHT)

TWIN ENGINE

1/2"x5"x5" HIGH WATER BILGE BOARD  
A/C SEACOCK BOARD  
3/4"x5"x5" 1 1/8" HOLE TO BE CENTERED IN BLOCK

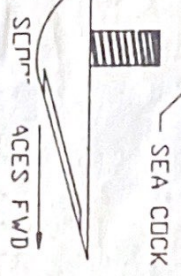
SINGLE ENGINE

A/C WATER PUMP

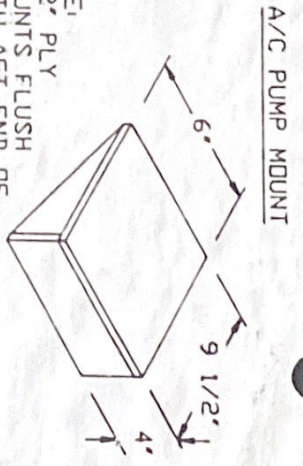
STRAINER SECURES TO SIDE OF STRIN  
OPT. A/C PUM. MOUNT BOARD

A/C SEACOCK BOARD  
3/4"x5"x5" (1 1/8" HOLE TO BE CENTERED IN BLOCK)

1/2"x5"x5" HIGH WATER BILGE BOARD



NOTE:  
-1/2" PLY  
-MOUNTS FLUSH  
WITH AFT END OF  
GAS TANK BOARD



A/C PUMP MOUNT

CONDENSATE DRAIN, ROUTE TO SUMP  
A/C DISCHARGE THRU-HULL

WATER INTAKE

HANGING LOCKER

A/C UNIT

DINETTE BASE

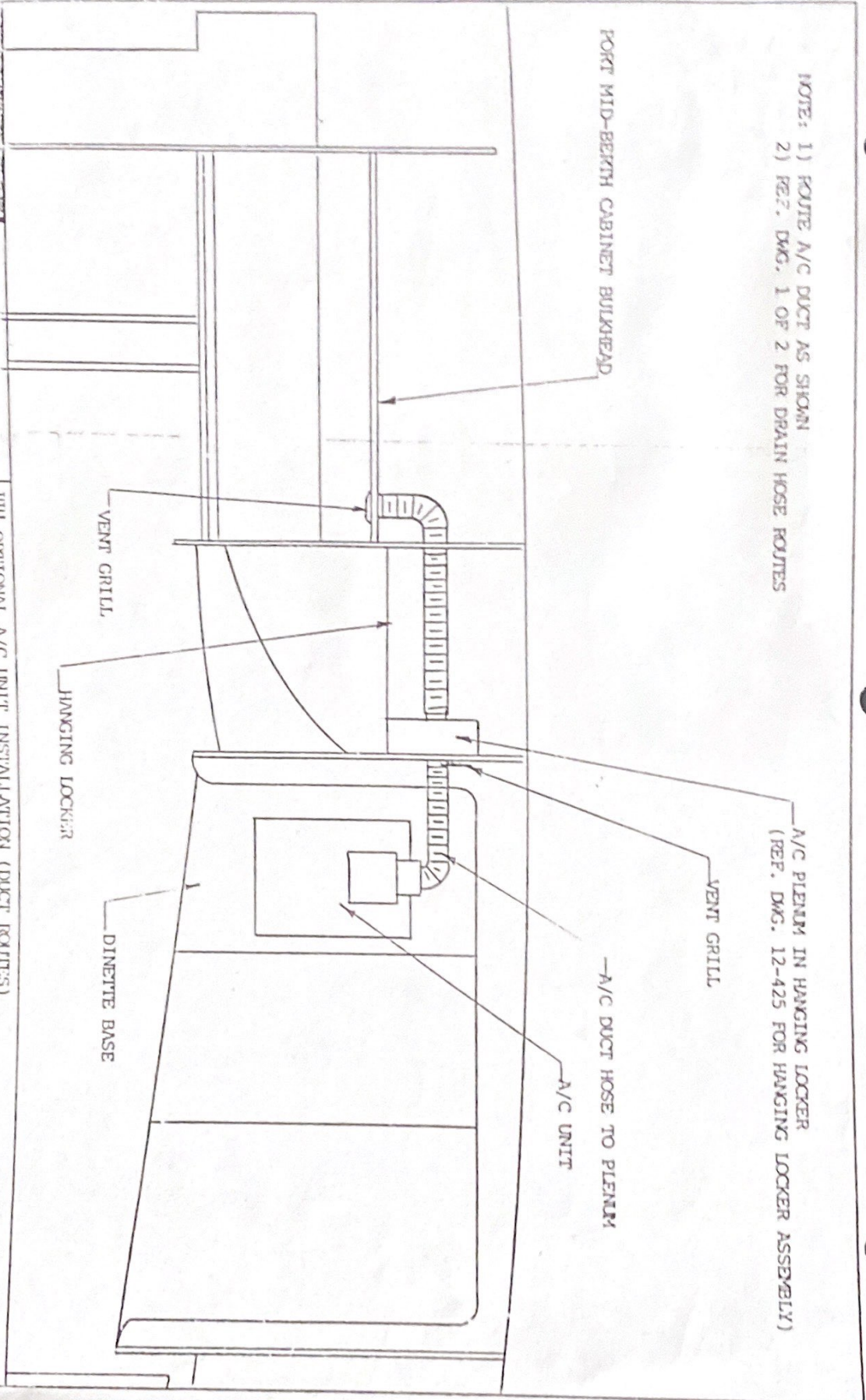
SUMP

SEA RAY<sup>®</sup>  
OXFORD  
PLANT ENGINEERING

TITLE	OPTIONAL A/C MOTORWELL LAYOUT	270DPAC1
MODEL	270 DA	DRAWN BY J. CRAMER
DATE	7/27/89	CHECKED BY E.C.N. ND.
SCALE	N.T.S.	APPROVED BY
		REVISION NO. 1 (8/23/90)
		5803



NOTE: 1) ROUTE A/C DUCT AS SHOWN  
2) REF. DWG. 1 OF 2 FOR DRAIN HOSE ROUTES



**SEA RAY**  
PRODUCT DEVELOPMENT  
AND ENGINEERING

TITLE: OPTIONAL A/C UNIT INSTALLATION (DUCT ROUTES)			
MODEL 270 DA	DRAWN BY D. GRECA	REVISION NO.	
DATE 12-2-88	CHECKED BY	ICN NO. 0011	
SCALE	APPROVED BY	DRAWING NO. 08-210 (2 OF 2)	