

FASTNER LIST, FOR NUTS, BOLTS, SCREWS RINGS & CLIPS

GG	GHS-10-092	WASHER, 1 1/4" ID / 2" OD x .1/8"
HH	GHS-10-094	WASHER, 1" ID / 2" OD x 3/16"
II	GHS-10-093	WASHER, 1" ID / 2" OD x 1/8"
JJ	GHS-FS169	BOLT, CARRIAGE 1/2-13 x 2 1/4" S.S.
JJ	GHS-FS187	BOLT, CARRIAGE 1/2-13 x 3" S.S.
JJ	GHS-FS111	BOLT, CARRIAGE 1/2-13 x 4" S.S.
JJ	GHS-FS584	BOLT, CARRIAGE 1/2-13 x 5" S.S.
JJ	GHS-FS189	BOLT, CARRIAGE 1/2-13 x 6" S.S.
KK	GHS-FS452	NUT, NYLOCK 1/2-13 S.S.
LL	GHS-10-079	WASHER, BACK-UP PLATE
MM	GHS-FS116	BOLT, CARRIAGE 3/8-16 x 5" S.S.
MM	GHS-FS184	BOLT, CARRIAGE 3/8-16 x 6" S.S.
MM	GHS-FS188	BOLT, CARRIAGE 3/8-16 x 7" S.S.
NN	GHS-FS309	WASHER, NYLON 1/2"
OO	GHS-FS368	WASHER, FLAT 3/8 S.S.
PP	GHS-FS317	WASHER, LOCK 3/8 S.S.
RR	GHS-FS461	NUT, FINISH 3/8-16 S.S.



GENERAL HYDRAULIC SOLUTIONS Inc. •

MAT. X

NOTE:

PART TO SUB-ASSEMBLY (GHS A042B84015A1)

SHEET

OF

PART IDENTIFIER

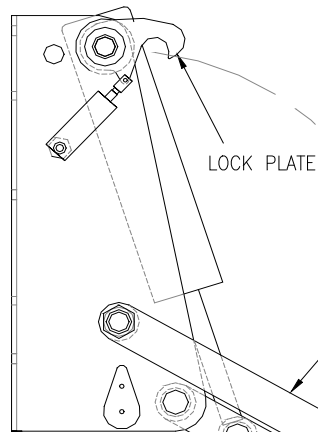
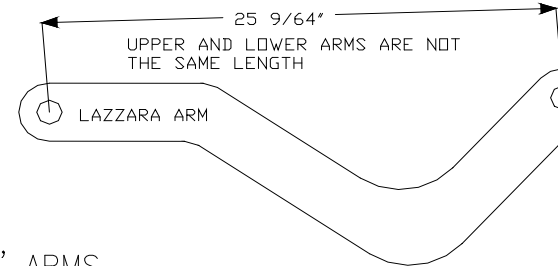
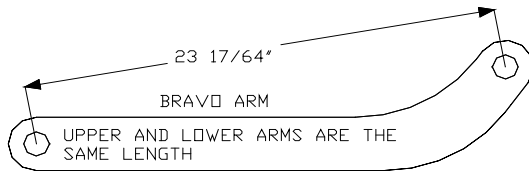
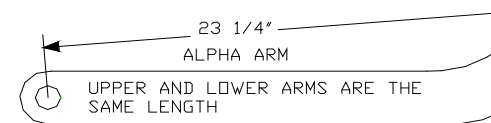
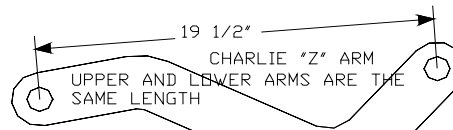
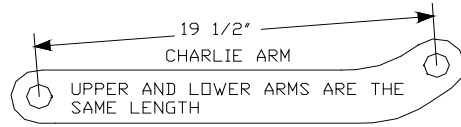
TRANSOM LIFT

DRW BY RAM
? REV-DATE: DDDMMYY

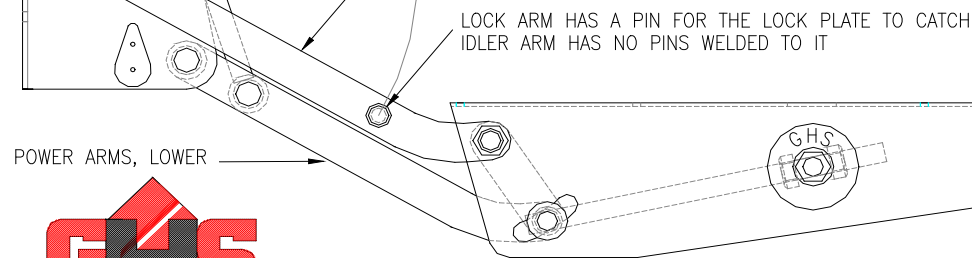
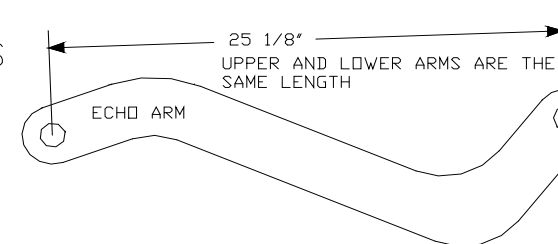
DWG.# GHS-XX-XXX
SCALE X
PLOT SCALE FIT A UNITS=INCHES

TOLERANCES
FRACTIONS DECIMALS
X ±.015
1/64 .XX ±.010
ANGLES .XXX ±.005
±1/2 .XXXX ±.005

ARM IDENTIFICATION



SEE PAGE 0 FOR ALPHA ARMS
SEE PAGE 0 FOR BRAVO ARMS
SEE PAGE 0 FOR CHARLIE ARMS
SEE PAGE 0 FOR CHARLIE "Z" ARMS
SEE PAGE 0 FOR ECHO ARMS
SEE PAGE 0 FOR LAZZARA ARMS



POWER ARMS, LOWER



GENERAL HYDRAULIC SOLUTIONS Inc. •

MAT. X

NOTE:

PART TO SUB-ASSEMBLY (GHS A042BB4015A1)

TOLERANCES
FRACTIONS DECIMALS
X ±.015
±1/64 XX ±.010
ANGLES .XXX ±.005
±1/2 .XXX ±.0005

PART IDENTIFIER

TRANSOM LIFT

DRW BY RAM
? REV-DATE: DDMMYY

DWG.# GHS-XX-XXX
SCALE X
PLOT SCALE FIT A

DATE DDMMYY
UNITS=INCHES

SHEET

OF

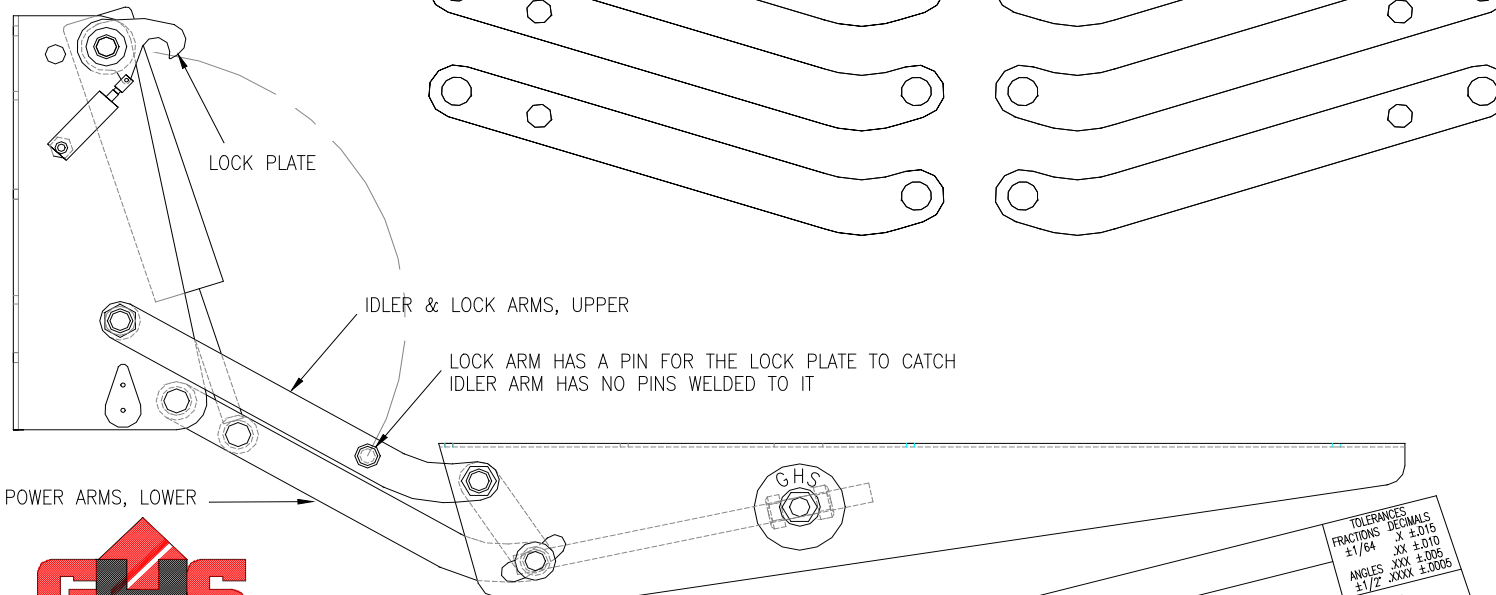
ALPHA ARM IDENTIFICATION

GHS10-071, 10-072, 10-073

GHS10-072 ARM UPPER WITH LOCK PIN
PORT & STARBOARD SIDES

GHS10-071 ARM UPPER, IDLER
PORT & STARBOARD SIDES

GHS10-073 ARM LOWER, POWER
PORT & STARBOARD SIDES



PART IDENTIFIER

TRANSOM LIFT

DRW BY RAM
? REV-DATE: DDMMYY

DWG.# GHS-XX-XXX
SCALE X
PLOT SCALE FIT A

TOLERANCES
FRACTIONS .XX ±.015
±1/64 .XX ±.010
ANGLES .XXX ±.005
±1/2° .XXX ±.008

DATE DDMMYY
UNITS=INCHES

GENERAL HYDRAULIC SOLUTIONS Inc. •

MAT. X

NOTE:

PART TO SUB-ASSEMBLY (GHS A042BB4015A1)

SHEET

OF

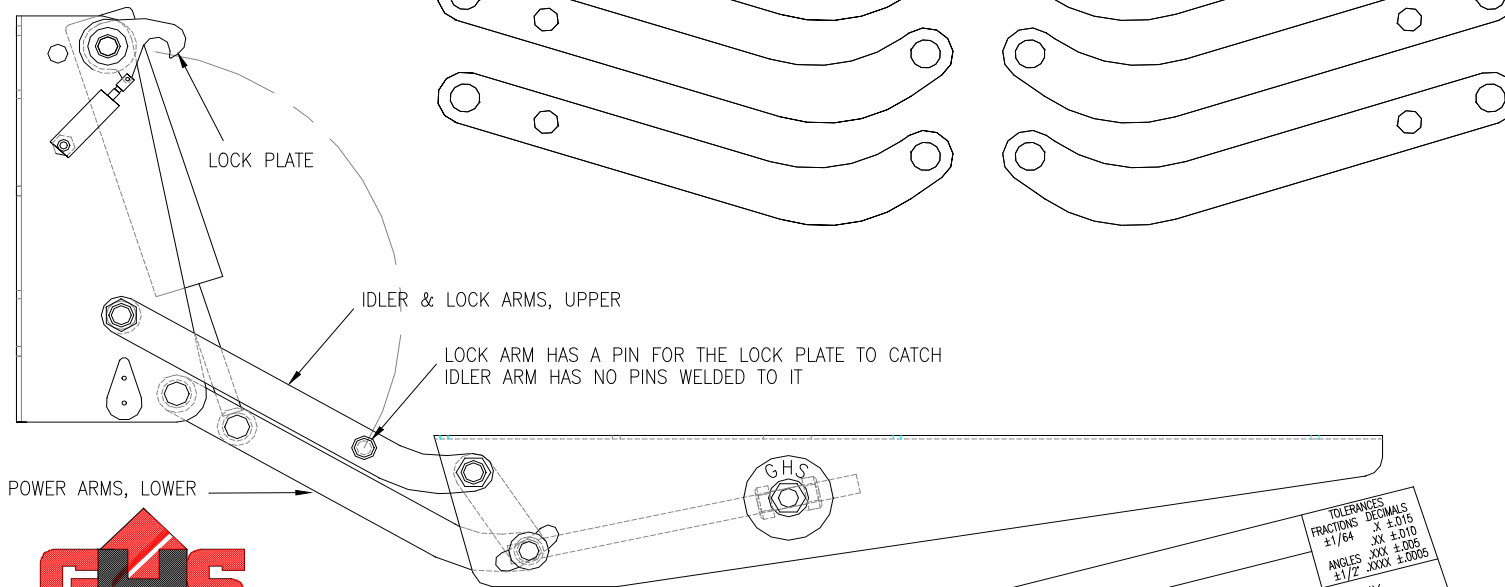
BRAVO ARM IDENTIFICATION

GHS10-065, 10-066, 10-067

GHS10-066 ARM UPPER WITH LOCK PIN
PORT & STARBOARD SIDES

GHS10-065 ARM UPPER, IDLER
PORT & STARBOARD SIDES

GHS10-067 ARM LOWER, POWER
PORT & STARBOARD SIDES



PART IDENTIFIER

TRANSOM LIFT

DRW BY RAM
? REV-DATE: DDMMYY

DWG.# GHS-XX-XXX
SCALE X
PLOT SCALE FIT A UNITS=INCHES

TOLERANCES
FRACTIONS DECIMALS
±1/8 .XX ±.015
±1/4 .XX ±.010
±1/2 .XXX ±.005
±1/2 .XXX ±.005

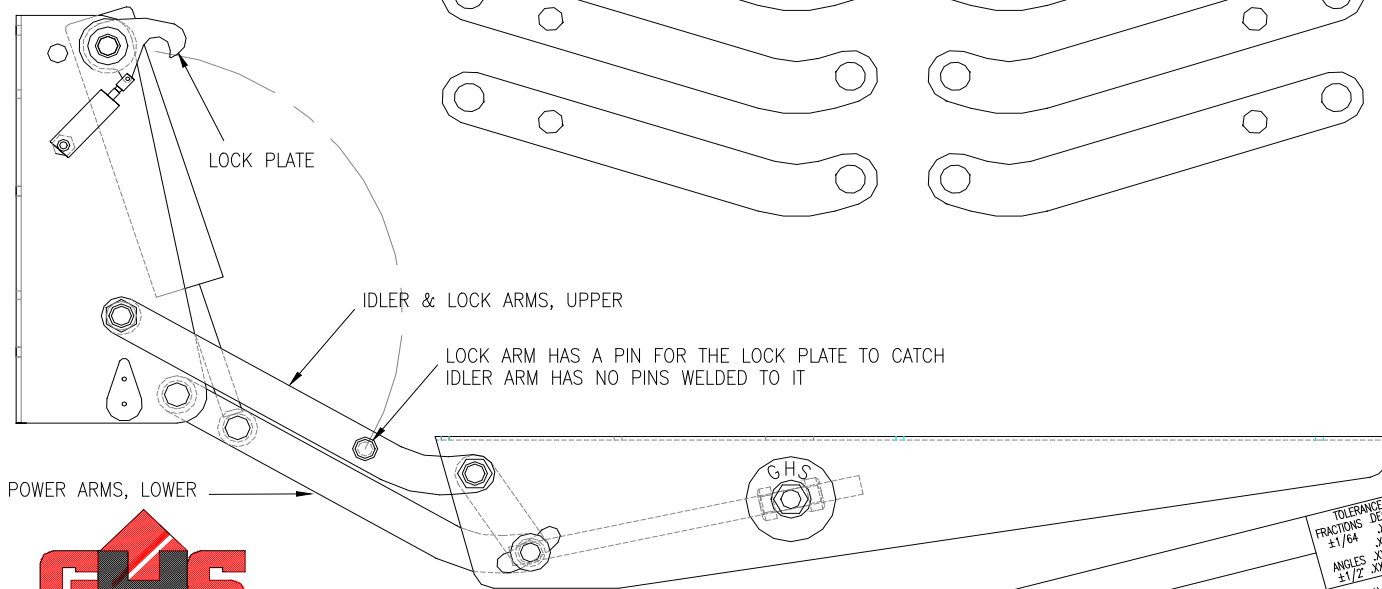
CHARLIE ARM IDENTIFICATION

GHS10-076, 10-077, 10-078

GHS10-076 ARM UPPER WITH LOCK PIN
PORT & STARBOARD SIDES

GHS10-077 ARM UPPER, IDLER
PORT & STARBOARD SIDES

GHS10-078 ARM LOWER, POWER
PORT & STARBOARD SIDES



PART IDENTIFIER

TRANSOM LIFT

DRW BY RAM
? REV-DATE: DDMMYY

DWG.# GHS-XX-XXX
SCALE X
PLOT SCALE FIT A UNITS=INCHES

TOLERANCES
FRACTIONS DECIMALS
±1/64 .XX ±.015
XX ±.010
ANGLES .XXX ±.005
±1/2 .XXX ±.0006

GENERAL HYDRAULIC SOLUTIONS Inc. •

MAT. X

NOTE:

PART TO SUB-ASSEMBLY (GHS A042BB4015A1)

SHEET

OF

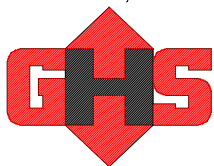
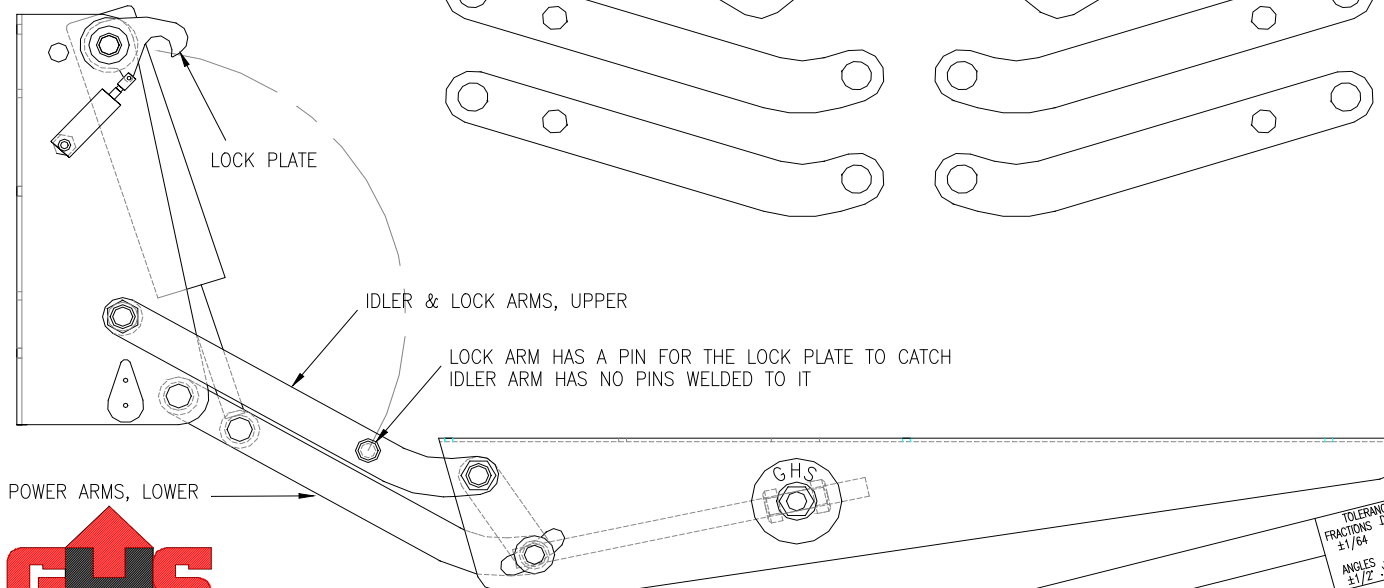
CHARLIE - Z ARM IDENTIFICATION

GHS10-149, 10-153, 10-078

GHS10-149 ARM UPPER WITH LOCK PIN
PORT & STARBOARD SIDES

GHS10-153 ARM UPPER, IDLER
PORT & STARBOARD SIDES

GHS10-078 ARM LOWER, POWER
PORT & STARBOARD SIDES



PART IDENTIFIER

TRANSOM LIFT

DRW BY RAM
? REV-DATE: DDMMYY

DWG.# GHS-XX-XXX
SCALE X
PLOT SCALE FIT A UNITS=INCHES

TOLERANCES
FRACTIONS DECIMALS
1/64 .X ±.015
XX ±.010
ANGLES .XXX ±.005
1/2 .XXX ±.0005

GENERAL HYDRAULIC SOLUTIONS Inc. •

MAT. X

NOTE:

PART TO SUB-ASSEMBLY (GHS A042BB4015A1)

SHEET

OF

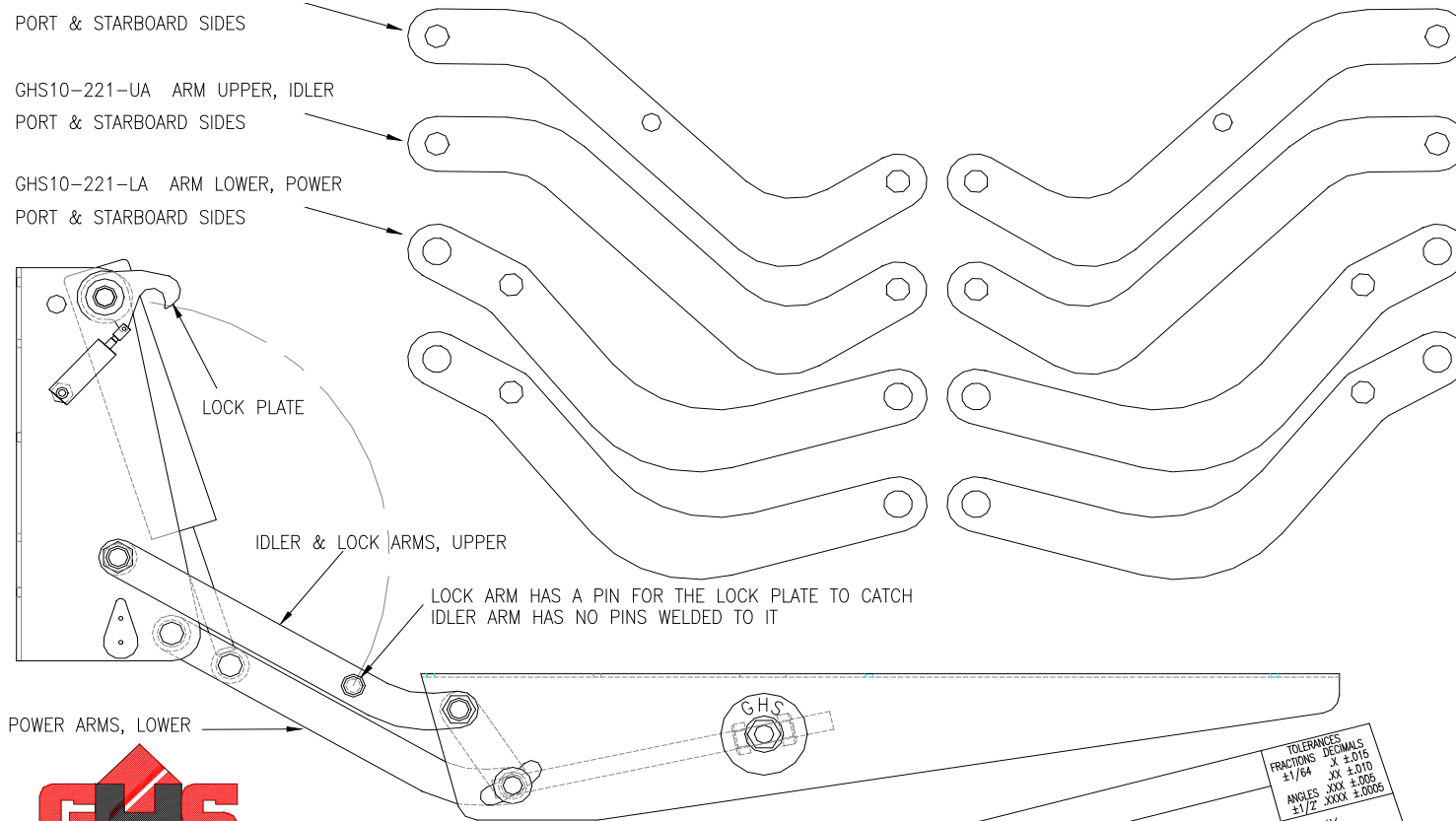
ECHO ARM IDENTIFICATION

GHS10-221-UAL, 10-221-UA, 10-221-LA

GHS10-221-UAL ARM UPPER WITH LOCK PIN
PORT & STARBOARD SIDES

GHS10-221-UA ARM UPPER, IDLER
PORT & STARBOARD SIDES

GHS10-221-LA ARM LOWER, POWER
PORT & STARBOARD SIDES



PART IDENTIFIER

TRANSOM LIFT

DRW BY: RAM
2 REV-DATE: DDMMYY

DWG.# GHS-XX-XXX
SCALE X
PLOT SCALE FIT A UNITS=INCHES

TOLERANCES DECIMALS
FRACTIONS .X ±.016
±1/64 .XX ±.010
ANGLES .XXX ±.005
±1/2 .XXX ±.0005

GENERAL HYDRAULIC SOLUTIONS Inc. •

MAT. X

NOTE:

PART TO SUB-ASSEMBLY (GHS A042BB4015A1)

SHEET

OF

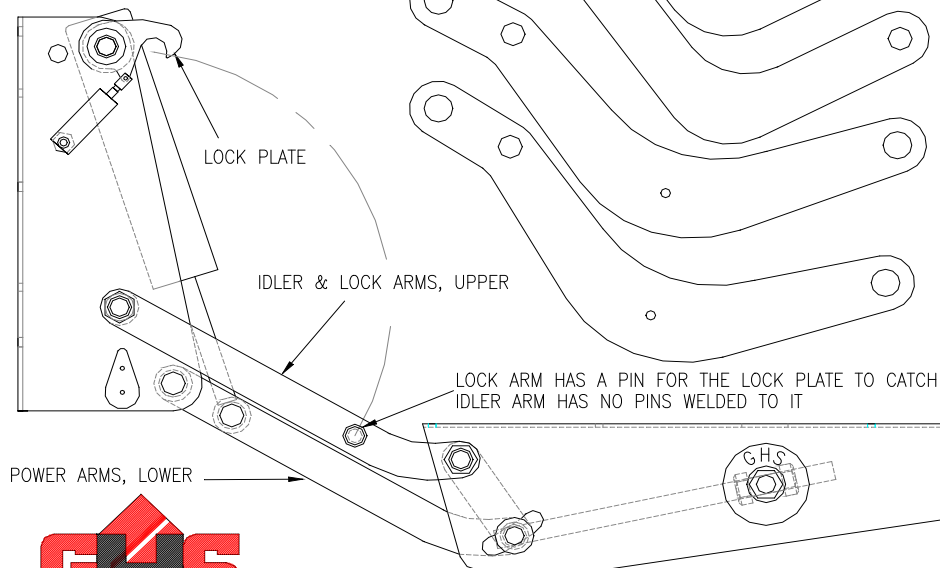
LAZZARA92 ARM IDENTIFICATION

GHS10-250-UAL, 10-250-UA, 10-250-LA

GHS10-250-UAL ARM UPPER WITH LOCK PIN
PORT & STARBOARD SIDES

GHS10-250-UA ARM UPPER, IDLER
PORT & STARBOARD SIDES

GHS10-250-LA ARM LOWER, POWER
PORT & STARBOARD SIDES



PART IDENTIFIER

TRANSOM LIFT

DRW BY: RAM
2 REV-DATE: DDDMMYY

DWG.# GHS-XX-XXX
SCALE X
PLOT SCALE FIT A UNITS=INCHES

TOLERANCES
FRACTIONS DECIMALS
±1/64 .XX ±.010
ANGLES .XXX ±.005
±1/2 .XXX ±.005

DATE DDDMMYY

GENERAL HYDRAULIC SOLUTIONS Inc. •

MAT. X

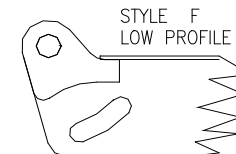
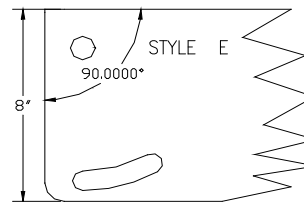
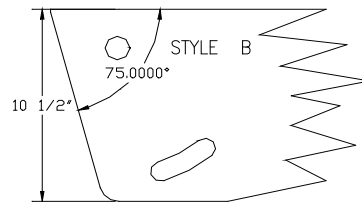
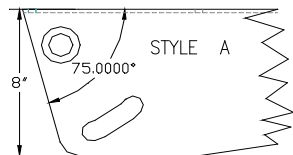
NOTE:

PART TO SUB-ASSEMBLY (GHS A042BB4015A1)

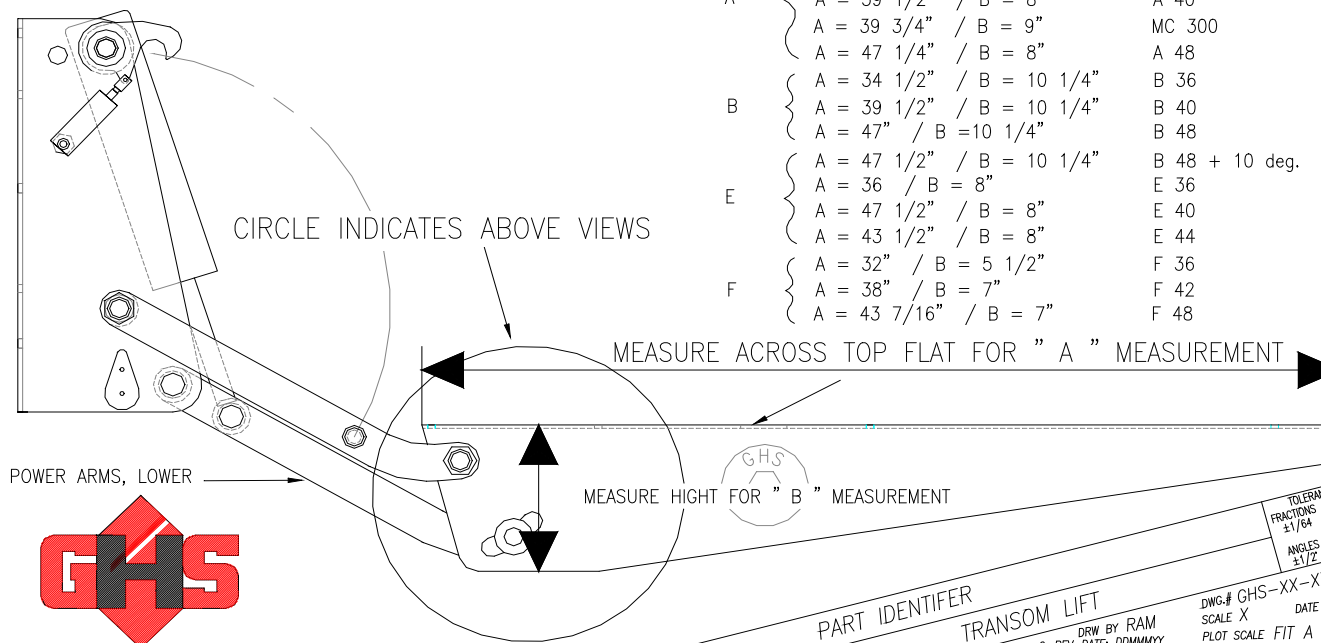
SHEET

OF

PLATFORM BRACKET IDENTIFICATION



STYLE	MEASUREMENTS	MODEL	PART NUMBER
A	A = 35 1/2" / B = 8"	A 36	GHS10-114
	A = 36 3/4" / B = 8"	A 36.75	GHS10-263
	A = 39 1/2" / B = 8"	A 40	GHS10-117
	A = 39 3/4" / B = 9"	MC 300	GHS10-279
	A = 47 1/4" / B = 8"	A 48	GHS10-059
B	A = 34 1/2" / B = 10 1/4"	B 36	GHS10-235
	A = 39 1/2" / B = 10 1/4"	B 40	GHS10-058
	A = 47" / B = 10 1/4"	B 48	GHS10-060
E	A = 47 1/2" / B = 10 1/4"	B 48 + 10 deg.	GHS10-254
	A = 36" / B = 8"	E 36	GHS10-246
	A = 47 1/2" / B = 8"	E 40	GHS10-147
	A = 43 1/2" / B = 8"	E 44	GHS10-158
F	A = 32" / B = 5 1/2"	F 36	GHS10-102
	A = 38" / B = 7"	F 42	GHS10-225
	A = 43 7/16" / B = 7"	F 48	GHS10-133



GENERAL HYDRAULIC SOLUTIONS Inc. •

MAT. X

NOTE:

PART TO SUB-ASSEMBLY (GHS A042BB4015A1)

SHEET

OF

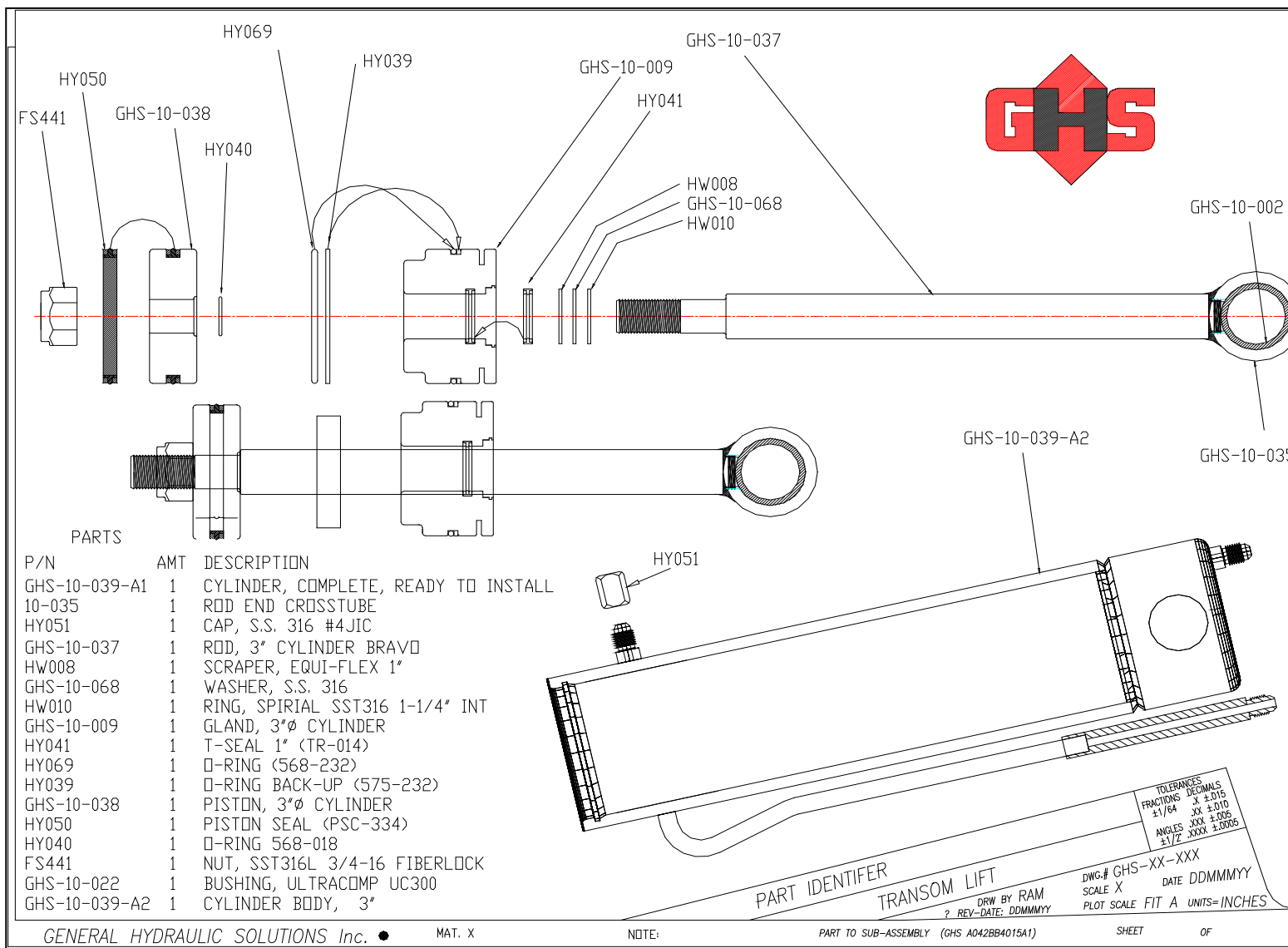
PART IDENTIFIER

TRANSOM LIFT

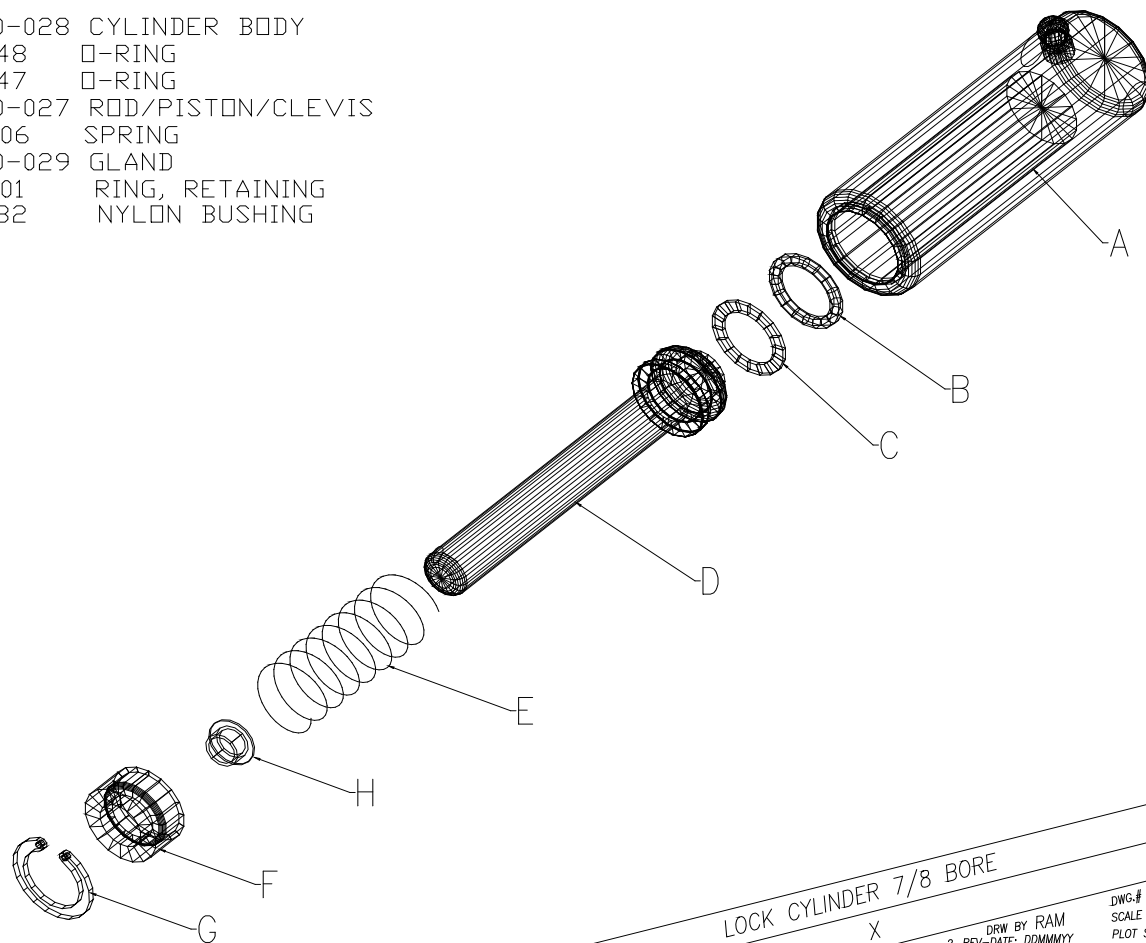
DRW BY RAM
? REV-DATE: DDMMYY

DWG.# GHS-XX-XXX
SCALE X
PLOT SCALE FIT A UNITS=INCHES
DATE DDMMYY

TOLERANCES DECIMALS
FRACTIONS X ±0.010
±1/64 XX ±0.010
ANGLES .XXX ±.005
±1/2 .XXX ±.0005



- A CP10-028 CYLINDER BODY
- B HY048 O-RING
- C HY047 O-RING
- D MP10-027 ROD/PISTON/CLEVIS
- E HW006 SPRING
- F MP10-029 GLAND
- G HW001 RING, RETAINING
- H FS082 NYLON BUSHING



LOCK CYLINDER 7/8 BORE
X

DWG.# SA10028
SCALE X
DATE 8JAN01
PLOT SCALE FIT A UNITS=INCHES

TOLERANCES
FRACTIONS DECIMALS
±1/64 .XX ±.015
ANGLES .XXX ±.005
±1/2° .XXXX ±.0005



GENERAL HYDRAULIC SOLUTIONS Inc. •

MAT. X

NOTE:

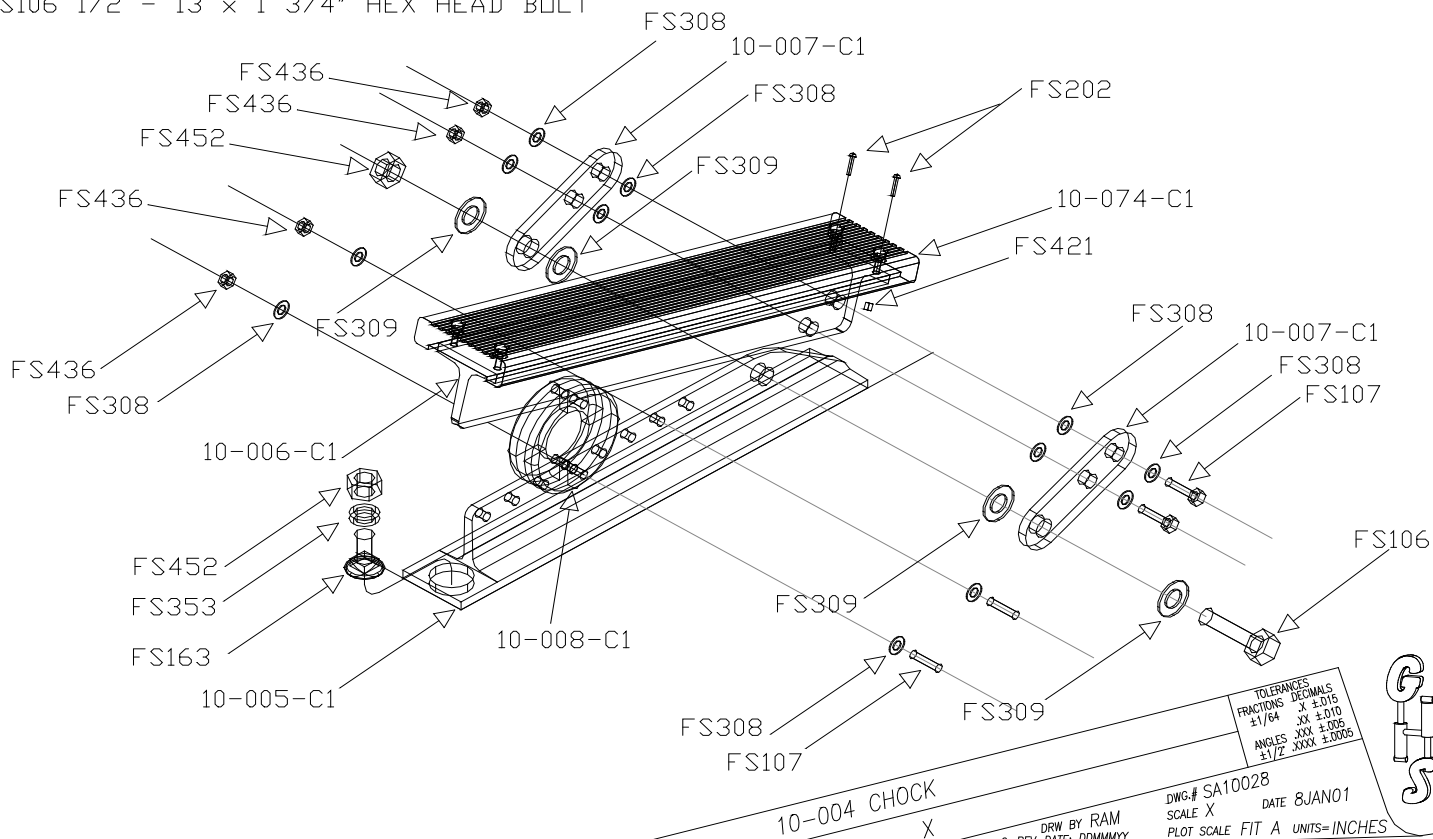
PART TO SUB-ASSEMBLY (GHS-XX-XXX)

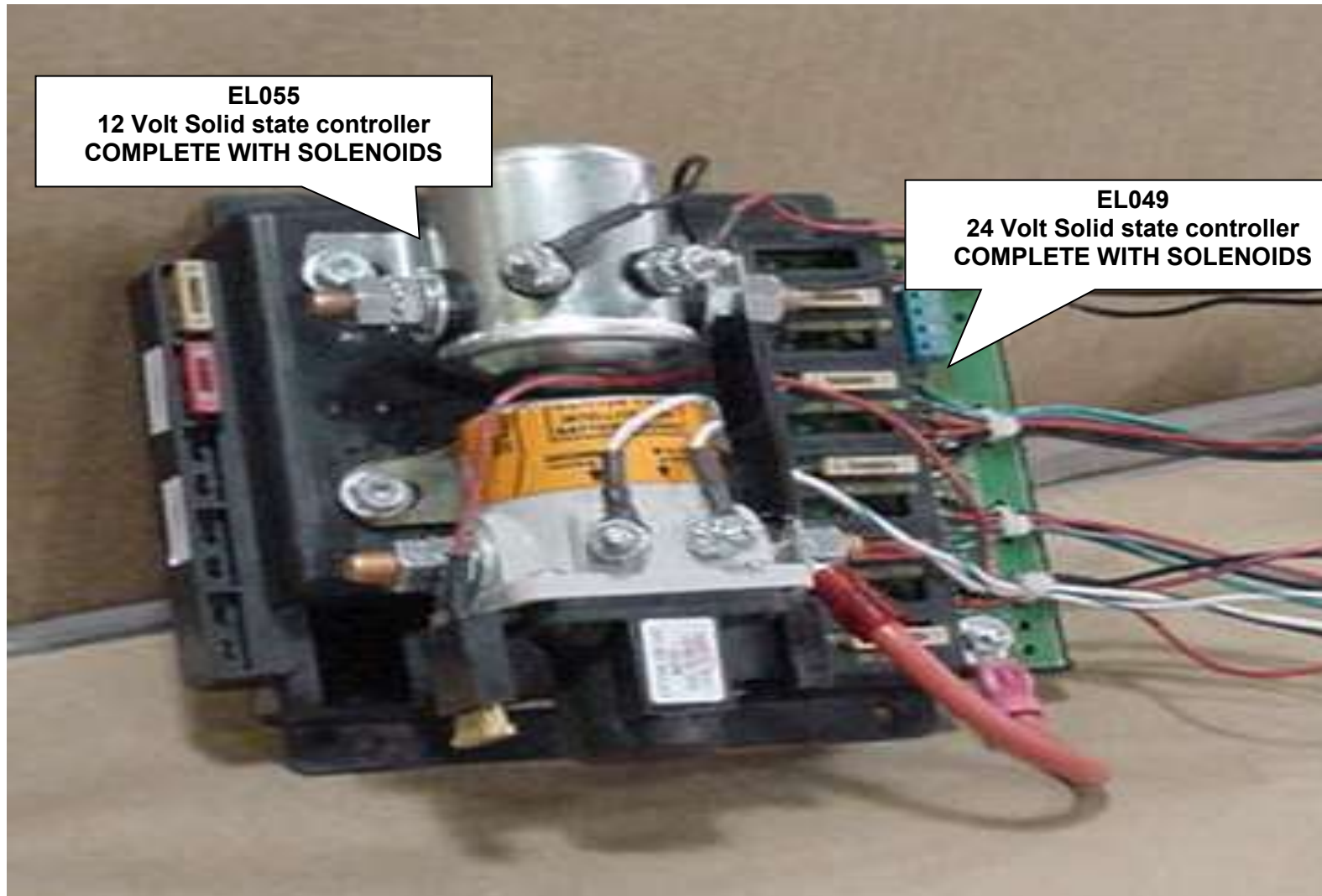
SHEET

OF

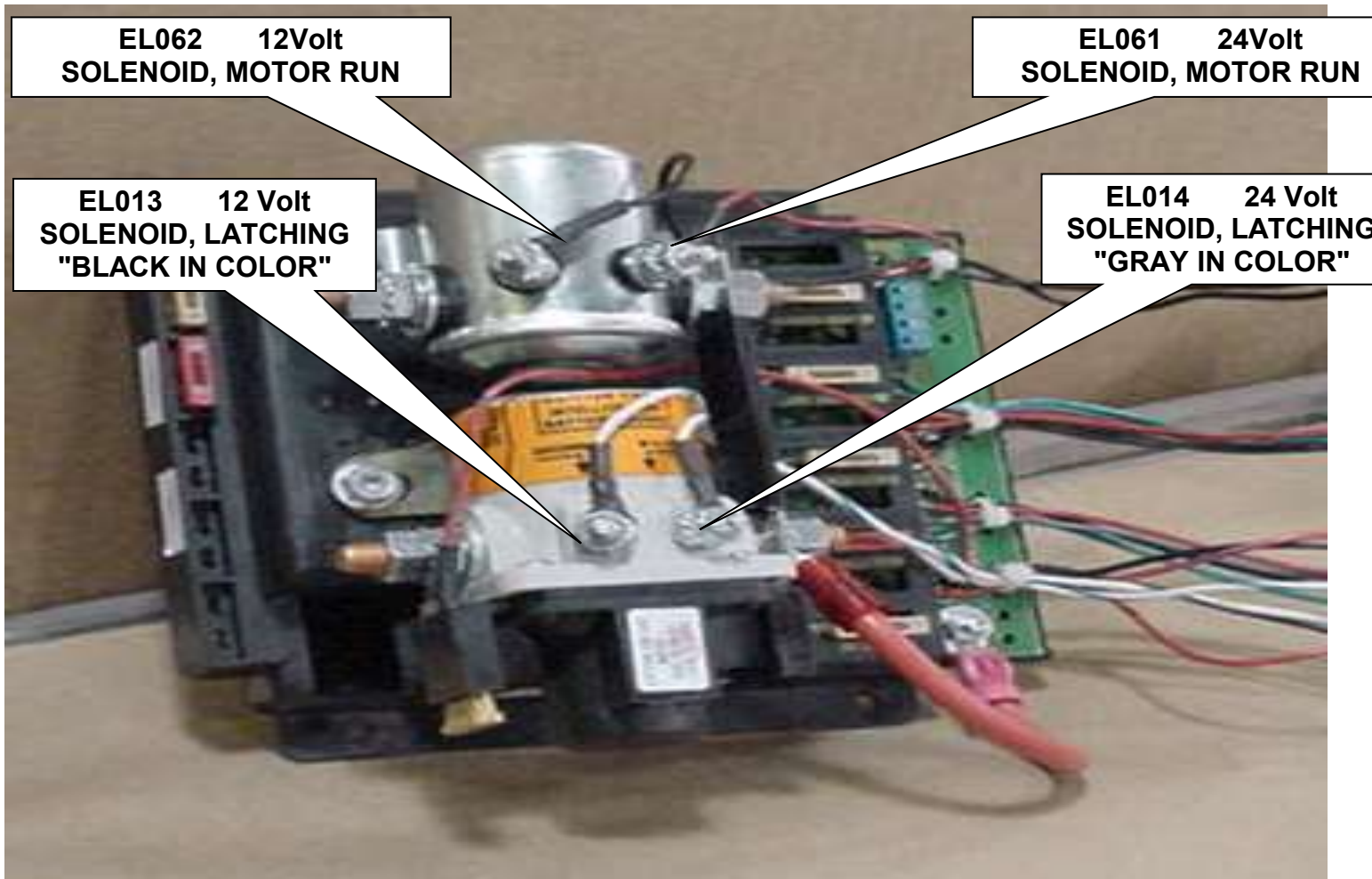
A 10-005-C1 CHOCK, BOTTOM TEE
 B 10-006-C1 CHOCK, TOP TEE
 C 10-007-C1 CHOCK, HINGE PLATE
 D 10-008-C1 CHOCK, DONUT
 E 10-074-C1 TREAD, CHOCK
 F FS202 10-24x1 BUTTON HEAD MACHINE SCREW
 G FS421 10-24 NYLOCK NUT
 H FS106 1/2 - 13 x 1 3/4" HEX HEAD BOLT

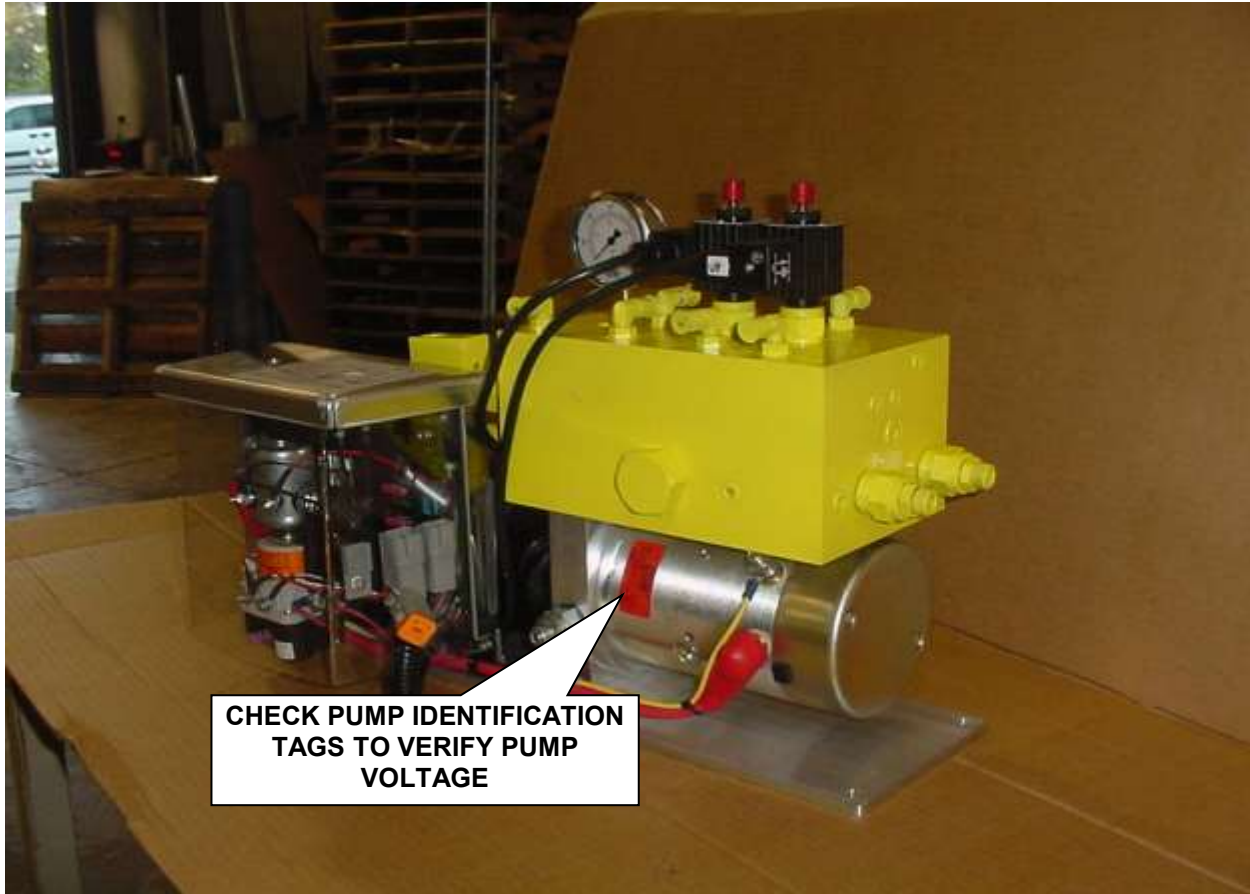
I FS452 1/2 - 13 NYLOCK NUT
 J FS353 NYLON WASHER 1/2x3/4x3/16
 K FS163 CARRIAGE BOLT 1/2 - 13 x 1"
 L FS309 WASHER, NYLON 1/2"
 M FS107 BOLT, HEX HEAD 1/4-20x1 1/2"
 N FS436 NUT, NYLOCK 1/4-20
 O FS308 WASHER, NYLON 1/4"





**THE SOLID STATE CONTROLLER SHOWN IN THESE PICTURES IS A 24 VOLT MODEL
USED FOR DEMONSTRATION PURPOSE ONLY
VERIFY PUMP VOLTAGE BEFORE ORDERING PARTS**







**CHECK PUMP IDENTIFICATION
TAGS TO VERIFY PUMP**

TAGS TO VERIFY PUMP
VOLTAGE