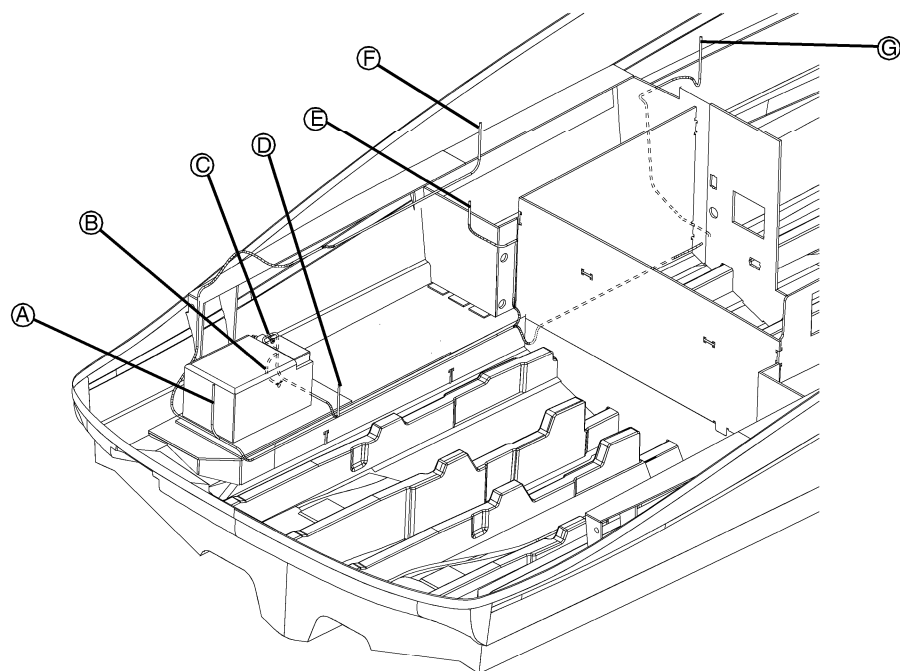


SECTION 6 • ELECTRICAL SYSTEM

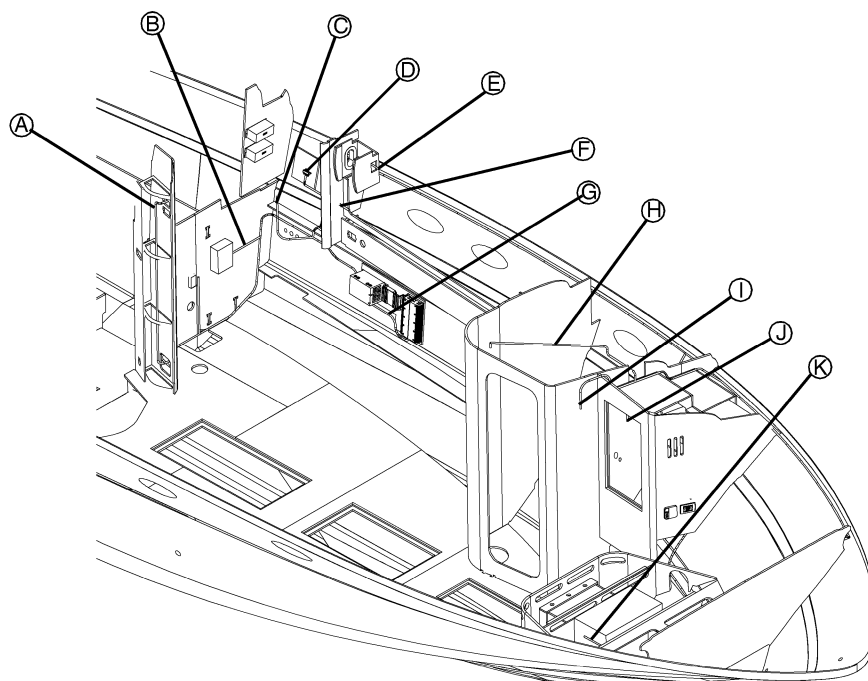
GENERATOR HARNESS
(FIG. 6.21.1)



- Ⓐ REMOTE HARNESS (DIESEL)
- Ⓑ FUEL PUMP CONNECTORS (GAS)
- Ⓒ REMOTE HARNESS (GAS)
- Ⓓ BILGE HARNESS
- Ⓔ FUEL VALVE (GAS)
- Ⓕ REMOTE GAUGES
- Ⓖ TO DC DISTRIBUTION PANEL

DRAWING NO. 09-819

PORT CABIN HARNESS
(FIG. 6.21.2)



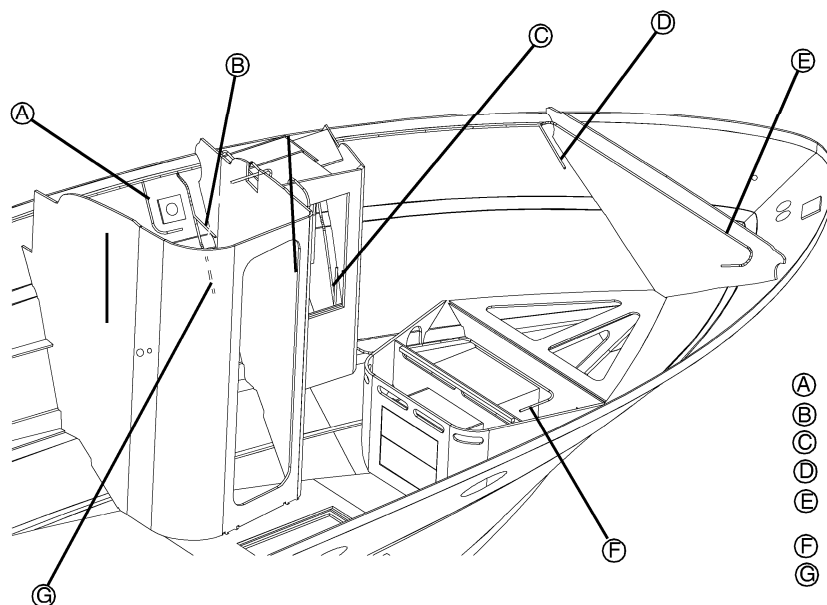
- Ⓐ CABIN ENTRY SWITCHES/CO MONITOR
- Ⓑ SALON A/C
- Ⓒ MDP/STEREO
- Ⓓ TV ANTENNA SPLITTER
- Ⓔ TV ANTENNA AMP
- Ⓕ SALON CO MONITOR
- Ⓖ STEREO AMPLIFIER
- Ⓗ MASTER HEAD LIGHTS
- Ⓘ MASTER STATEROOM CO MONITOR
- Ⓙ MASTER STATEROOM HANGING LOCKER LIGHT
- Ⓚ MASTER STATEROOM AIR CONDITIONER

DRAWING NO. 09-821 (1 OF 2)



SECTION 6 • ELECTRICAL SYSTEM

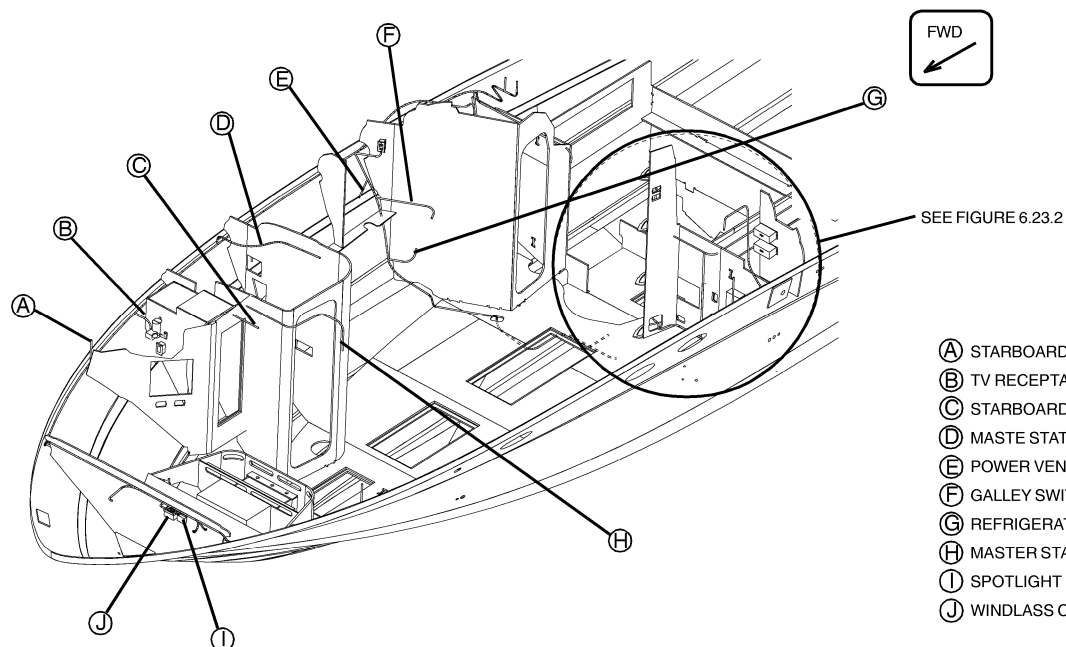
PORT CABIN HARNESS
(FIG. 6.22.1)



- Ⓐ MASTER STATEROOM HEAD VENT
- Ⓑ MASTER STATEROOM HEAD RECEPTACLE
- Ⓒ MASTER STATEROOM RECEPTACLE
- Ⓓ MASTER STATEROOM PORT SPEAKER
- Ⓔ MASTER STATEROOM STARBOARD SPEAKER
- Ⓕ MASTER STATEROOM AIR CONDITIONER
- Ⓖ MASTER STATEROOM HEAD SWITCHES

DRAWING NO. 09-821 (2 OF 2)

STARBOARD CABIN HARNESS
(FIG. 6.22.2)

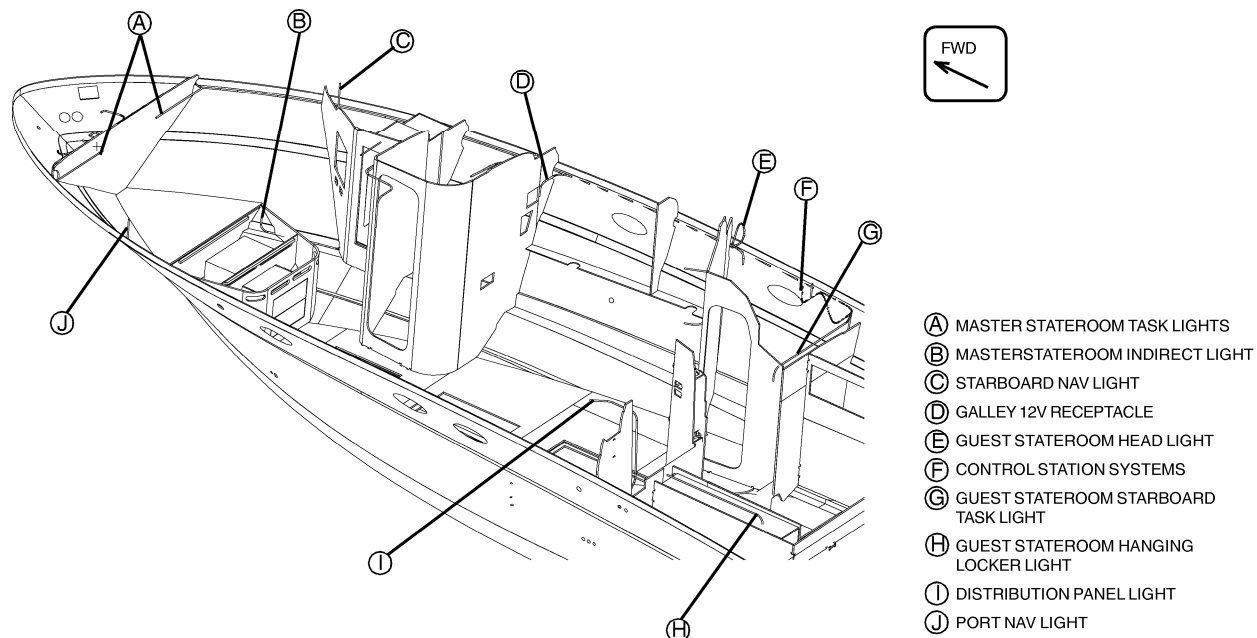


- Ⓐ STARBOARD NAV LIGHT
- Ⓑ TV RECEPTACLE/HORN COMPRESSOR
- Ⓒ STARBOARD HANGING LOCKER LIGHT
- Ⓓ MASTER STATEROOM SHOWER LIGHT
- Ⓔ POWER VENT
- Ⓕ GALLEY SWITCHES
- Ⓖ REFRIGERATOR/FREEZER
- Ⓗ MASTER STATEROOM CEILING LIGHT
- Ⓘ SPOTLIGHT MODULE
- ⓵ WINDLASS CONTROL SOLENOID

DRAWING NO. 09-827 (1 OF 3)

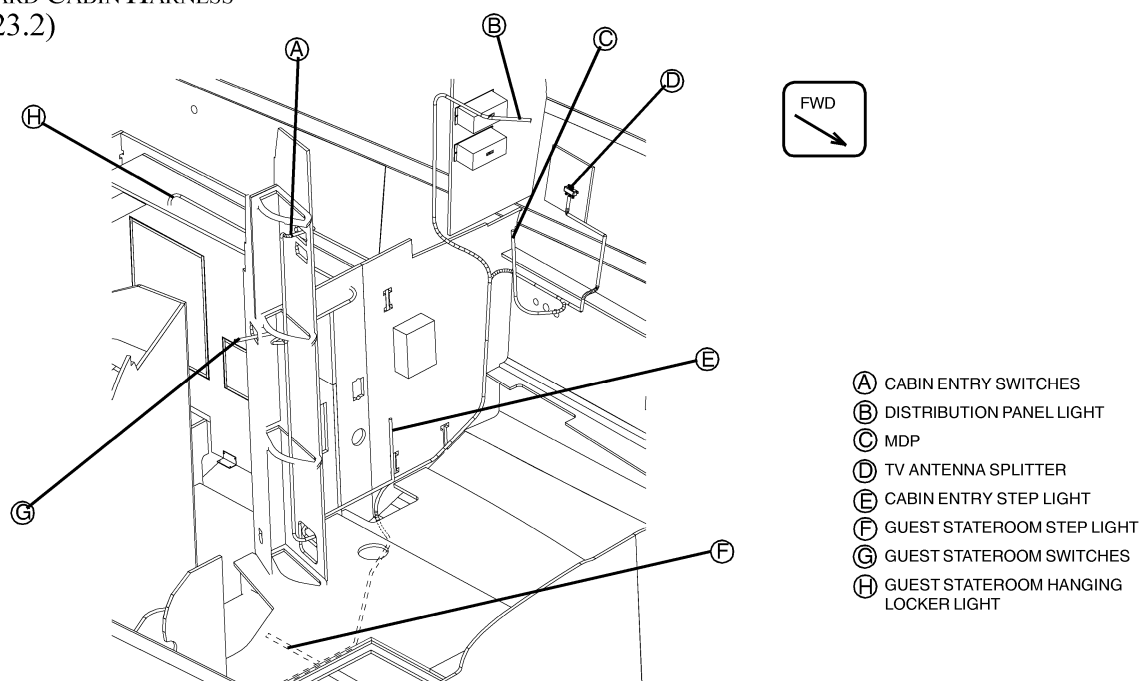
SECTION 6 • ELECTRICAL SYSTEM

STARBOARD CABIN HARNESS
(FIG. 6.23.1)



DRAWING NO. 09-827 (2 OF 3)

STARBOARD CABIN HARNESS
(FIG. 6.23.2)

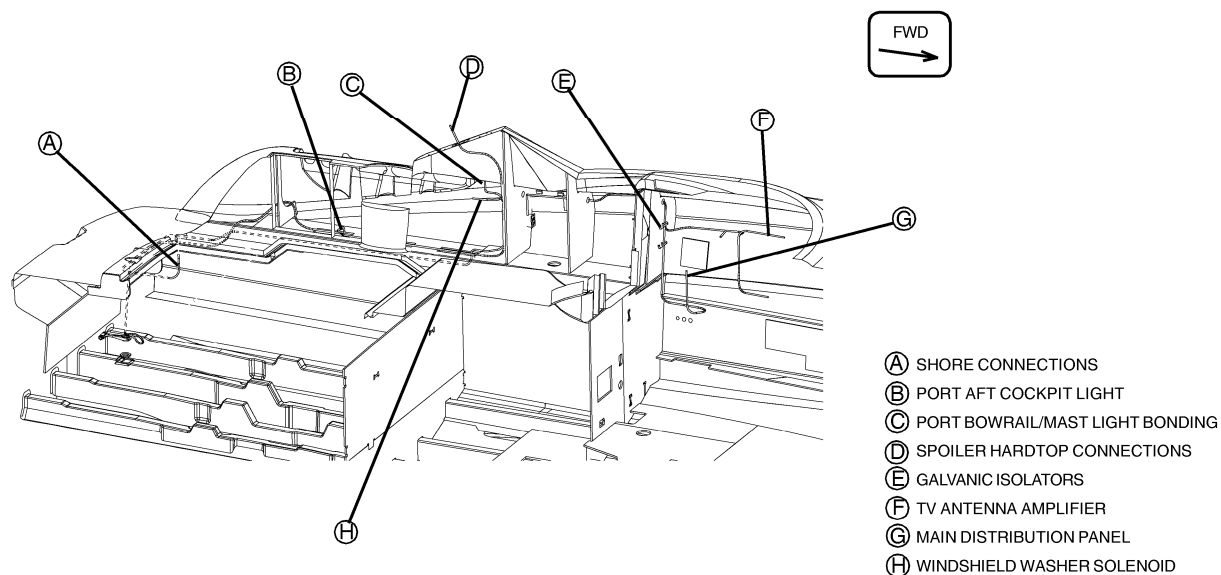


DRAWING NO. 09-827 (3 OF 3)



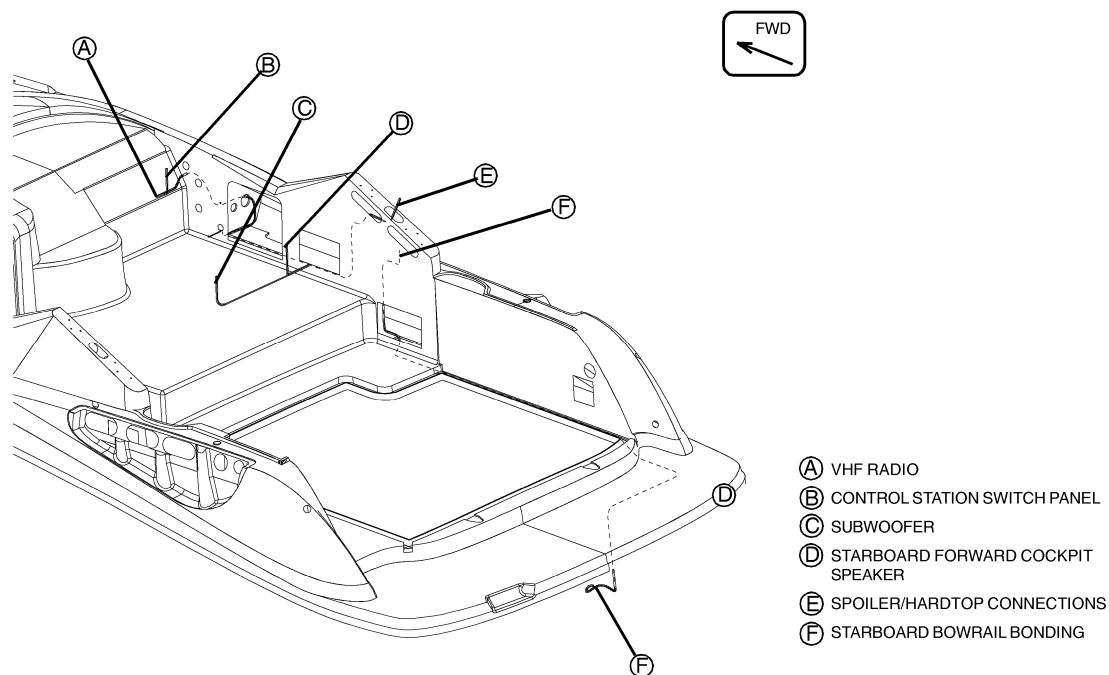
SECTION 6 • ELECTRICAL SYSTEM

PORT COCKPIT HARNESS
(FIG. 6.24.1)



DRAWING NO. 09-835 (2 OF 2)

STARBOARD COCKPIT HARNESS
(FIG. 6.24.2)



DRAWING NO. 09-841