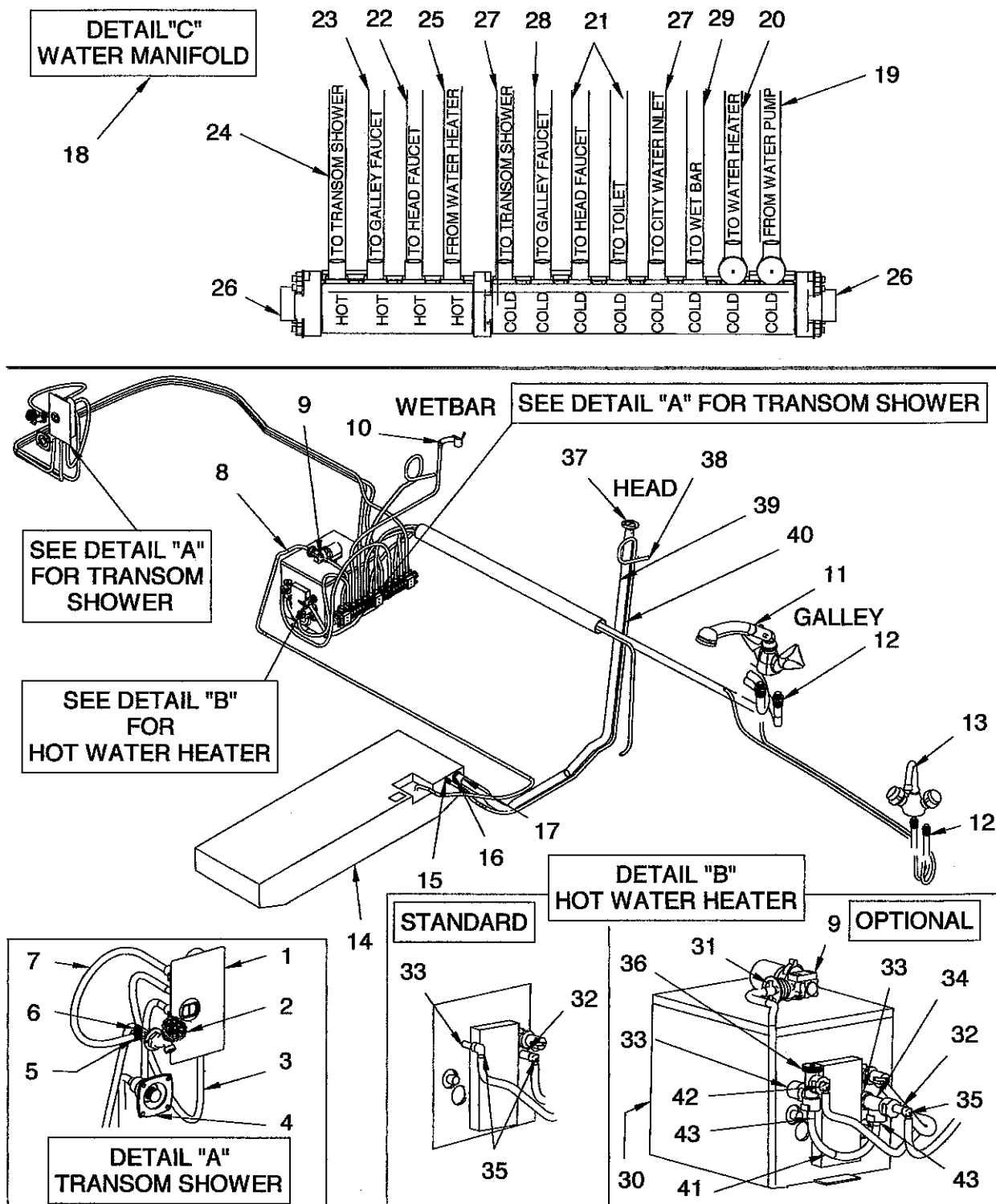


WATER SYSTEM



WATER SYSTEM

| | | |
|----|---------|--|
| 1 | 736702 | FAUCET, WASH-DOWN BOX W/MIXER (AQUATIK) VERT |
| | 1302587 | FAUCET, WASH-DOWN DOOR ONLY (AQUATIK) |
| | 1302579 | FAUCET, WASH-DOWN SHOWER UNIT ONLY (AQUATIK) |
| | 1302603 | FAUCET, WASH-DOWN SPRAYER HEAD ONLY (AQUATIK) |
| | 1742646 | LATCH, WASH-DOWN DOOR (AQUATIK) |
| 2 | 1096262 | FAUCET, SILL COCK WASH-DOWN (WHITECAP) |
| 3 | 1302595 | FAUCET, WASH-DOWN HOSE W/FPT ONLY (AQUATIK) |
| 4 | 141168 | INLET, WATER W/PRESS REGULATOR WHT |
| 5 | 1689292 | TEE, UNIFLEX PLAS 1/2" MPT |
| 6 | 1590009 | ADAPTER, SEARLEX BRS 1/2" FPT X 1/2" MPT EXTND |
| 7 | 1592435 | HOSE, SEARLEX BLUE W/1/2" FPT ENDS 2' |
| 8 | 1648724 | HOSE, SEARLEX BLUE 1/2" SW/FPT PLAS 13' |
| 9 | 1480433 | PUMP, FRESH WATER SHURFLO 2.8GPM IMP SOFT MNT |
| 10 | 1598424 | FAUCET, SCANDVIK CKPT ENT CTR WHT |
| 11 | 1253095 | FAUCET/SHOWER, WHT/MIX W/ON/OFF FLX TAIL |
| 12 | 1425180 | ADAPTER, SEARLEX BRS 1/2" MPT X 3/8" COMP FAUCET |
| 13 | 982173 | FAUCET, GALLEY CLASSIC SHORT SPOUT W/HANDLES |
| 14 | 1628494 | TANK, WATER - 40GAL |
| | 1717412 | SENDING UNIT, WATER 1/4" NPT X 6 3/4" |
| 15 | 1689293 | NIPPLE, UNIFLEX PLAS 1/2" UNION |
| 16 | 814814 | ADAPTER, PVC 1.5" MPT X 1.5" BARB MACHINED |
| 17 | 172726 | HOSE CUFF, 1.5" RH WHT |
| 18 | 1686500 | MANIFOLD, SEATECH W/8 CLD 4 HOT |
| 19 | 1689329 | HOSE, UNIFLEX BLUE 1/2" SW/FPT PLAS 4' |
| 20 | 1689301 | HOSE, UNIFLEX BLUE 1/2" SW/FPT PLAS 2' |
| 21 | 1719101 | HOSE, UNIFLEX BLUE 1/2" SW/FPT PLAS 10' |
| | 1689304 | HOSE, UNIFLEX BLUE 1/2" SW/FPT PLAS 8' |
| 22 | 1689317 | HOSE, UNIFLEX RED 1/2" SW/FPT PLAS 18' |
| 23 | 1689315 | HOSE, UNIFLEX RED 1/2" SW/FPT PLAS 12' |
| 24 | 1689412 | HOSE, UNIFLEX RED 1/2" SW/FPT PLAS 16' |
| 25 | 1689403 | HOSE, UNIFLEX RED 1/2" SW/FPT PLAS 6' |
| 26 | 1282953 | FITTING, SEATECH BRASS 1" MNFLD END STOP |
| 27 | 1689335 | HOSE, UNIFLEX BLUE 1/2" SW/FPT PLAS 16' |
| 28 | 1689310 | HOSE, UNIFLEX BLUE 1/2" SW/FPT PLAS 18' |
| 29 | 1689306 | HOSE, UNIFLEX BLUE 1/2" SW/FPT PLAS 12' |
| 30 | 1142496 | HEATER, WATER 6 GAL 110/60 W/75-210T&P |
| | 1156728 | HEATER, WATER 6 GAL 220/50 W/75-210T&P (220VOLT OPTION) |
| 31 | 406710 | FILTER, IN-LINE WATER 1/2" FPT |
| 32 | 1425149 | VALVE, SEARLEX BRS CHECK 1/2" MPT |
| 33 | 1425156 | NIPPLE, SEARLEX BRS 1/2" MPT LONG (FRESH WATER COOLING - GAS INBOARDS OPTION) |
| 34 | 325944 | TEE, BRASS STREET 1/2" MPT X 1/2" FPT X 1/2" FPT (FRESH WATER COOLING - GAS INBOARDS OPTION) |
| 35 | 1376037 | ELBOW, BRASS 90DEG 1/2" MPT X 1/2" MPT (FRESH WATER COOLING - GAS INBOARDS OPTION) |
| 36 | 1054766 | VALVE, BRASS WATER HEATER TEMPERING 120-160DG (FRESH WATER COOLING - GAS INBOARDS OPTION) |
| 37 | 1109321 | DECK PLATE, WATER SS BLUE CLR-CODE |
| | 522581 | DECK PLATE, CAP W/CHAIN |
| | 522599 | KEY, DECK PLATE CAP |
| 38 | 126888 | VENT, FUEL/WATER TANK 5/8" X 3" |
| | 256677 | CLAMP, HOSE #12 1/2"-1.25" SS .505 |
| 39 | 490219 | HOSE, CORR SAN/WATER-FILL 1.5" RH |
| | 172726 | HOSE CUFF, 1.5" RH WHT |
| | 256693 | CLAMP, HOSE #24 1"-2" SS .505 |
| 40 | 124719 | HOSE, SANI/CHEMICAL TDX 5/8" |
| 41 | 1592435 | HOSE, SEARLEX BLUE W/1/2" FPT ENDS 2' (FRESH WATER COOLING - GAS INBOARDS OPTION) |
| 42 | 169086 | ELBOW, BRASS 90DEG STREET 1/2" |
| 43 | 168898 | NIPPLE, BRASS 1/2" MPT X 3.5" (FRESH WATER COOLING - GAS INBOARDS OPTION) |

NOT SHOWN

| | |
|---------|--|
| 1689293 | NIPPLE, UNIFLEX PLAS 1/2" UNION |
| 144675 | ADAPTER, BRASS 1/2" MPT X 5/8" BARB |
| 836080 | BRACKET, PVC 1.5" X 1.5" X 12" 1/4" HOLES |
| 1215235 | CLIP, SEATECH COLLET 15MM |
| 1214832 | ELBOW, SEATECH 90DEG EQUAL 15MM (T-D4.2L D-TRON BR3(225PHP)/VOL S/D DSL OPT) |
| 1214840 | ELBOW, SEATECH 90DEG STEM 15MM (T-D4.2L D-TRON BR3(225PHP)/VOL S/D DSL OPT) |
| 168898 | NIPPLE, BRASS 1/2" MPT X 3.5" |
| 130351 | PIPE, PVC SCH 20 BOE PIPE 3/4" X 20' |
| 1214824 | TEE, SEATECH EQUAL 15MM (T-D4.2L D-TRON BR3(225PHP)/VOL S/D DSL OPT) |